

# Dreyfus Cash Management Funds

## Prospectus | June 1, 2021

### **Institutional Shares**

**Dreyfus Cash Management (DICXX)**  
**Dreyfus Government Cash Management (DGCXX)**  
**Dreyfus Government Securities Cash Management (DIPXX)**  
**Dreyfus Treasury Obligations Cash Management (DTRXX)**  
**Dreyfus Treasury Securities Cash Management (DIRXX)**  
**Dreyfus Tax Exempt Cash Management (DEIXX)**

As with all mutual funds, the Securities and Exchange Commission has not approved or disapproved these securities or passed upon the adequacy of this prospectus. Any representation to the contrary is a criminal offense.

# Contents

## Fund Summaries

---

Dreyfus Cash Management	1
Dreyfus Government Cash Management	5
Dreyfus Government Securities Cash Management	8
Dreyfus Treasury Obligations Cash Management	11
Dreyfus Treasury Securities Cash Management	14
Dreyfus Tax Exempt Cash Management	17

## Fund Details

---

Goal and Approach	21
Investment Risks	22
Management	25

## Shareholder Guide

---

Buying and Selling Shares	28
General Policies	31
Distributions and Taxes	32
Services for Fund Investors	32
Financial Highlights	34

## For More Information

---

*See back cover.*

# Fund Summary

## Dreyfus Cash Management

### Investment Objective

The fund seeks as high a level of current income as is consistent with the preservation of capital and the maintenance of liquidity.

### Fees and Expenses

This table describes the fees and expenses that you may pay if you buy, hold and sell shares of the fund. **You may pay other fees, such as brokerage commissions and other fees to financial intermediaries, which are not reflected in the table and examples below.**

<b>Annual Fund Operating Expenses</b> (expenses that you pay each year as a percentage of the value of your investment)	
	<b>Institutional Shares</b>
Management fees	.10
Other expenses:	
<i>Shareholder services fees</i>	.10
<i>Miscellaneous other expenses</i>	.01
Total other expenses	<u>.11</u>
Total annual fund operating expenses*	.21

\* Restated to reflect current management fees and shareholder services fees.

### Example

The Example is intended to help you compare the cost of investing in the fund with the cost of investing in other mutual funds. The Example assumes that you invest \$10,000 in the fund for the time periods indicated and then hold or redeem all of your shares at the end of those periods. The Example also assumes that your investment has a 5% return each year and that the fund's operating expenses remain the same. Although your actual costs may be higher or lower, based on these assumptions your costs would be:

	<b>1 Year</b>	<b>3 Years</b>	<b>5 Years</b>	<b>10 Years</b>
Institutional Shares	\$22	\$68	\$118	\$268

### Principal Investment Strategy

To pursue its goal, the fund normally invests in a diversified portfolio of high quality, short-term, dollar-denominated debt securities, including: securities issued or guaranteed as to principal and interest by the U.S. government or its agencies or instrumentalities; certificates of deposit, time deposits, bankers' acceptances and other short-term securities issued by domestic or foreign banks or thrifts or their subsidiaries or branches; repurchase agreements, including tri-party repurchase agreements; asset-backed securities; municipal securities; domestic and dollar-denominated foreign commercial paper and other short-term corporate obligations, including those with floating or variable rates of interest; and dollar-denominated obligations issued or guaranteed by one or more foreign governments or any of their political subdivisions or agencies.

The fund's investments are concentrated in the banking industry, because the fund normally invests at least 25% of its net assets in domestic or dollar-denominated foreign bank obligations.

The fund is a money market fund subject to the maturity, quality, liquidity and diversification requirements of Rule 2a-7 under the Investment Company Act of 1940, as amended, although the net asset value of the fund's shares will "float," meaning the net asset value will fluctuate with changes in the values of the fund's portfolio securities.

## Principal Risks

---

An investment in the fund is not a bank deposit. It is not insured or guaranteed by the Federal Deposit Insurance Corporation (FDIC) or any other government agency. You could lose money by investing in the fund. Because the share price of the fund will fluctuate, when you sell your shares they may be worth more or less than what you originally paid for them. The fund's yield will fluctuate as the short-term securities in its portfolio mature or are sold and the proceeds are reinvested in securities with different interest rates. The fund may impose a fee upon the sale of shares (a "liquidity fee") or may temporarily suspend your ability to sell shares (a redemption "gate") if the fund's liquidity falls below required minimums because of market conditions or other factors. Neither BNY Mellon Investment Adviser, Inc. nor its affiliates have a legal obligation to provide financial support to the fund, and you should not expect that BNY Mellon Investment Adviser, Inc. or its affiliates will provide financial support to the fund at any time. The following are the principal risks that could reduce the fund's income level and/or share price:

- *Interest rate risk.* This risk refers to the decline in the prices of fixed-income securities that may accompany a rise in the overall level of interest rates. A sharp and unexpected rise in interest rates could cause the fund's share price to decline. Very low or negative interest rates may magnify interest rate risk. In addition, a low interest rate environment may prevent the fund from providing a positive yield or paying fund expenses out of fund assets and could lead to a decline in the fund's share price. Interest rates in the United States currently are at or near historic lows due to market forces and actions of the Board of Governors of the Federal Reserve System in the U.S., primarily in response to the novel coronavirus (COVID-19) pandemic and resultant market disruptions. Changing interest rates, including rates that fall below zero, may have unpredictable effects on markets, may result in heightened market volatility and may detract from fund performance. For floating and variable rate obligations, there may be a lag between an actual change in the underlying interest rate benchmark and the reset time for an interest payment of such an obligation, which could harm or benefit the fund, depending on the interest rate environment or other circumstances.
- *Liquidity risk.* When there is little or no active trading market for specific types of securities, it can become more difficult to sell the securities in a timely manner at or near their perceived value. In such a market, the value of such securities may fall dramatically, potentially leading to a decline in the fund's share price.
- *Credit risk.* Failure of an issuer of a security to make timely interest or principal payments when due, or a decline or perception of a decline in the credit quality of the security, can cause the security's price to fall. Although the fund invests only in high quality debt securities, the credit quality of the securities held by the fund can change rapidly in certain market environments, and the default or a significant price decline of a single holding could have the potential to cause significant deterioration of the fund's net asset value.
- *Floating net asset value risk.* The fund does not maintain a stable net asset value per share. The net asset value of the fund's shares will be calculated to four decimal places and will "float," meaning the net asset value will fluctuate with changes in the values of the fund's portfolio securities. You could lose money by investing in the fund.
- *Liquidity fee and/or redemption gate risk.* The fund may impose a fee upon the sale of your shares (a "liquidity fee") or may temporarily suspend your ability to sell shares (a redemption "gate") if the fund's liquidity falls below required minimums because of unusual market conditions, an unusually high volume of redemption requests, redemptions by a few large investors, or other reasons. If a liquidity fee is imposed by the fund, it would reduce the amount you will receive upon the redemption of your shares. A "gate" will suspend your ability to redeem your shares while the gate is imposed and may prevent the fund from being able to pay redemption proceeds within the allowable time period stated in this prospectus.
- *Banking industry risk.* The risks generally associated with concentrating investments (i.e., hold 25% or more of its total assets) in the banking industry include interest rate risk, credit risk, and regulatory developments relating to the banking industry. Banks may be particularly susceptible to certain economic factors such as interest rate changes, adverse developments in the real estate market, fiscal and monetary policy and general economic cycles. An adverse development in the banking industry (domestic or foreign) may affect the value of the fund's investments more than if such investments were not concentrated in the banking industry.
- *Foreign investment risk.* The risks generally associated with dollar-denominated foreign investments include economic and political developments, seizure or nationalization of deposits, imposition of taxes or other restrictions on payment of principal and interest. The imposition of sanctions, confiscations, trade restrictions (including tariffs) and other government restrictions by the United States and other governments, or from problems in share registration, settlement or custody, may also result in losses. In addition, the fund will be subject to the risk that an issuer of foreign sovereign debt or the government authorities that control the repayment of the debt may be unable or unwilling to repay the principal or interest when due.

- *U.S. Treasury securities risk.* A security backed by the U.S. Treasury or the full faith and credit of the United States is guaranteed only as to the timely payment of interest and principal when held to maturity, but the market prices for such securities are not guaranteed and will fluctuate.
- *Government securities risk.* Not all obligations of the U.S. government, its agencies and instrumentalities are backed by the full faith and credit of the U.S. Treasury. Some obligations are backed only by the credit of the issuing agency or instrumentality, and in some cases there may be some risk of default by the issuer. Any guarantee by the U.S. government or its agencies or instrumentalities of a security held by the fund does not apply to the market value of such security or to shares of the fund itself.
- *Repurchase agreement counterparty risk.* The fund is subject to the risk that a counterparty in a repurchase agreement and/or, for a tri-party repurchase agreement, the third party bank providing payment administration, collateral custody and management services for the transaction, could fail to honor the terms of the agreement.
- *Asset-backed securities risk.* Asset-backed securities are subject to credit, prepayment and extension risk, and may be more volatile, less liquid and more difficult to price accurately than more traditional debt securities. General downturns in the economy could cause the value of asset-backed securities to fall. Asset-backed securities are often subject to more rapid repayment than their stated maturity date would indicate as a result of the pass-through of prepayments of principal on the underlying loans. During periods of declining interest rates, prepayment of loans underlying asset-backed securities can be expected to accelerate. Accordingly, the fund's ability to maintain positions in such securities will be affected by reductions in the principal amount of such securities resulting from prepayments, and its ability to reinvest the returns of principal at comparable yields is subject to generally prevailing interest rates at that time.
- *Municipal securities risk.* Municipal securities may be fully or partially backed or enhanced by the taxing authority of a local government, by the current or anticipated revenues from a specific project or specific assets, or by the credit of, or liquidity enhancement provided by, a private issuer. Special factors, such as legislative changes, and state and local economic and business developments, may adversely affect the yield and/or value of the fund's investments in municipal securities. In addition, the cost associated with combating the outbreak of COVID-19 and its negative impact on tax revenues has adversely affected the financial condition of many state and local governments. The effects of this outbreak could affect the ability of state and local governments to make payments on debt obligations when due and could adversely impact the value of their bonds.
- *Market risk.* The value of the securities in which the fund invests may be affected by political, regulatory, economic and social developments, and developments that impact specific economic sectors, industries or segments of the market. In addition, turbulence in financial markets and reduced liquidity in equity, credit and/or fixed income markets may negatively affect many issuers, which could adversely affect the fund. Global economies and financial markets are becoming increasingly interconnected, and conditions and events in one country, region or financial market may adversely impact issuers in a different country, region or financial market. These risks may be magnified if certain events or developments adversely interrupt the global supply chain; in these and other circumstances, such risks might affect companies world-wide. Recent examples include pandemic risks related to COVID-19 and aggressive measures taken world-wide in response by governments, including closing borders, restricting international and domestic travel, and the imposition of prolonged quarantines of large populations, and by businesses, including changes to operations and reducing staff.

## Performance

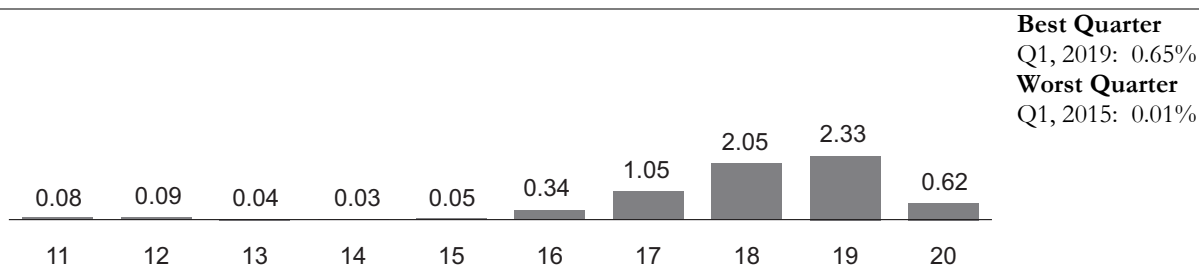
---

The following bar chart and table provide some indication of the risks of investing in the fund. The bar chart shows changes in the performance of the fund's Institutional shares from year to year. The table shows the average annual total returns of the fund's Institutional shares over time. The fund's past performance is not necessarily an indication of how the fund will perform in the future. More recent performance information may be available at [www.dreyfus.com](http://www.dreyfus.com).

---

**Year-by-Year Total Returns** as of 12/31 each year (%)**Institutional Shares**

---



The year-to-date total return of the fund's Institutional shares as of March 31, 2021 was 0.02%.

---

**Average Annual Total Returns** as of 12/31/20

	1 Year	5 Years	10 Years
Institutional Shares	0.62%	1.27%	0.66%

For the current yield for Institutional shares call toll-free 1-800-346-3621. Individuals or entities for whom institutions may purchase or redeem shares should call the institution directly.

---

**Portfolio Management**

---

The fund is managed by Dreyfus Cash Investment Strategies, a division of BNY Mellon Investment Adviser, Inc., the fund's investment adviser.

---

**Purchase and Sale of Fund Shares**

---

The fund's Institutional shares are designed for institutional investors, acting for themselves or in a fiduciary, advisory, agency, brokerage, custodial or similar capacity. Institutional shares of the fund may not be purchased directly by individuals, although institutions may purchase shares for accounts maintained by individuals. In general, the fund's minimum initial investment for Institutional shares is \$10,000,000 with no minimum subsequent investment, unless: (a) the investor has invested at least \$10,000,000 in the aggregate among the fund and any of the Cash Management Funds, the Preferred Funds or Dreyfus Treasury and Agency Liquidity Money Market Fund; or (b) the investor has, in the opinion of BNY Mellon Institutional Services, adequate intent and availability of assets to reach a future aggregate level of investment of \$10,000,000 in such funds. You may sell (redeem) your shares on any business day by telephone or compatible computer facility.

---

**Tax Information**

---

The fund's distributions are taxable as ordinary income or capital gains, except when your investment is through a U.S. tax-advantaged investment plan (in which case you may be taxed upon withdrawal of your investment from such account).

---

**Payments to Broker-Dealers and Other Financial Intermediaries**

---

If you purchase shares through a broker-dealer or other financial intermediary (such as a bank), the fund's distributor and its related companies may pay the intermediary for the sale of fund shares and related services. To the extent that the intermediary may receive lesser or no payments in connection with the sale of other investments, the payments from the fund's distributor and its related companies may create a potential conflict of interest by influencing the broker-dealer or other intermediary and your financial representative to recommend the fund over the other investments. This potential conflict of interest may be addressed by policies, procedures or practices adopted by the financial intermediary. As there may be many different policies, procedures or practices adopted by different intermediaries to address the manner in which compensation is earned through the sale of investments or the provision of related services, the compensation rates and other payment arrangements that may apply to a financial intermediary and its representatives may vary by intermediary. Ask your financial representative or visit your financial intermediary's website for more information.

# Fund Summary

## Dreyfus Government Cash Management

### Investment Objective

The fund seeks as high a level of current income as is consistent with the preservation of capital and the maintenance of liquidity.

### Fees and Expenses

This table describes the fees and expenses that you may pay if you buy, hold and sell shares of the fund. **You may pay other fees, such as brokerage commissions and other fees to financial intermediaries, which are not reflected in the table and examples below.**

Annual Fund Operating Expenses (expenses that you pay each year as a percentage of the value of your investment)	
	Institutional Shares
Management fees	.20
Other expenses:	
<i>Shareholder services fees</i>	.00*
<i>Miscellaneous other expenses</i>	.01
Total other expenses	.01
Total annual fund operating expenses	.21

\* Amount represents less than .01%.

### Example

The Example is intended to help you compare the cost of investing in the fund with the cost of investing in other mutual funds. The Example assumes that you invest \$10,000 in the fund for the time periods indicated and then hold or redeem all of your shares at the end of those periods. The Example also assumes that your investment has a 5% return each year and that the fund's operating expenses remain the same. Although your actual costs may be higher or lower, based on these assumptions your costs would be:

	1 Year	3 Years	5 Years	10 Years
Institutional Shares	\$22	\$68	\$118	\$268

### Principal Investment Strategy

The fund pursues its investment objective by investing only in government securities (i.e., securities issued or guaranteed as to principal and interest by the U.S. government or its agencies or instrumentalities, including those with floating or variable rates of interest), repurchase agreements collateralized solely by government securities and/or cash, and cash. The fund is a money market fund subject to the maturity, quality, liquidity and diversification requirements of Rule 2a-7 under the Investment Company Act of 1940, as amended, and seeks to maintain a stable share price of \$1.00.

The fund is a "government money market fund," as that term is defined in Rule 2a-7, and as such is required to invest at least 99.5% of its total assets in securities issued or guaranteed as to principal and interest by the U.S. government or its agencies or instrumentalities, repurchase agreements collateralized solely by cash and/or government securities, and cash. The fund normally invests at least 80% of its net assets in government securities and repurchase agreements collateralized solely by government securities (i.e., under normal circumstances, the fund will not invest more than 20% of its net assets in cash and/or repurchase agreements collateralized by cash). The securities in which the fund invests include those backed by the full faith and credit of the U.S. government, which include U.S. Treasury securities as well as securities issued by certain agencies of the U.S. government, and those that are neither insured nor guaranteed by the U.S. government.

## Principal Risks

---

An investment in the fund is not a bank deposit. It is not insured or guaranteed by the Federal Deposit Insurance Corporation (FDIC) or any other government agency. You could lose money by investing in the fund. Although the fund seeks to preserve the value of your investment at \$1.00 per share, it cannot guarantee it will do so. The fund's yield will fluctuate as the short-term securities in its portfolio mature or are sold and the proceeds are reinvested in securities with different interest rates. The fund currently is not permitted to impose a fee upon the sale of shares (a "liquidity fee") or temporarily suspend redemptions (a redemption "gate") under distressed conditions as some other types of money market funds are, and the fund's board has no intention to impose a liquidity fee or redemption gate. Neither BNY Mellon Investment Adviser, Inc. nor its affiliates have a legal obligation to provide financial support to the fund, and you should not expect that BNY Mellon Investment Adviser, Inc. or its affiliates will provide financial support to the fund at any time. The following are the principal risks that could reduce the fund's income level and/or share price:

- *Interest rate risk.* This risk refers to the decline in the prices of fixed-income securities that may accompany a rise in the overall level of interest rates. A sharp and unexpected rise in interest rates could impair the fund's ability to maintain a stable net asset value. Very low or negative interest rates may magnify interest rate risk. In addition, a low interest rate environment may prevent the fund from providing a positive yield or paying fund expenses out of fund assets and could impair the fund's ability to maintain a stable net asset value. Interest rates in the United States currently are at or near historic lows due to market forces and actions of the Board of Governors of the Federal Reserve System in the U.S., primarily in response to the novel coronavirus (COVID-19) pandemic and resultant market disruptions. Changing interest rates, including rates that fall below zero, may have unpredictable effects on markets, may result in heightened market volatility and may detract from fund performance. For floating and variable rate obligations, there may be a lag between an actual change in the underlying interest rate benchmark and the reset time for an interest payment of such an obligation, which could harm or benefit the fund, depending on the interest rate environment or other circumstances.
- *Liquidity risk.* When there is little or no active trading market for specific types of securities, it can become more difficult to sell the securities in a timely manner at or near their perceived value. In such a market, the value of such securities may fall dramatically, potentially impairing the fund's ability to maintain a stable net asset value.
- *U.S. Treasury securities risk.* A security backed by the U.S. Treasury or the full faith and credit of the United States is guaranteed only as to the timely payment of interest and principal when held to maturity, but the market prices for such securities are not guaranteed and will fluctuate.
- *Government securities risk.* Not all obligations of the U.S. government, its agencies and instrumentalities are backed by the full faith and credit of the U.S. Treasury. Some obligations are backed only by the credit of the issuing agency or instrumentality, and in some cases there may be some risk of default by the issuer. Any guarantee by the U.S. government or its agencies or instrumentalities of a security held by the fund does not apply to the market value of such security or to shares of the fund itself.
- *Repurchase agreement counterparty risk.* The fund is subject to the risk that a counterparty in a repurchase agreement could fail to honor the terms of the agreement.
- *Market risk.* The value of the securities in which the fund invests may be affected by political, regulatory, economic and social developments. Events such as war, acts of terrorism, the spread of infectious illness or other public health issue, recessions, or other events could have a significant impact on the fund and its investments. Recent examples include pandemic risks related to COVID-19 and aggressive measures taken world-wide in response by governments, including closing borders, restricting international and domestic travel, and the imposition of prolonged quarantines of large populations, and by businesses, including changes to operations and reducing staff.

## Performance

---

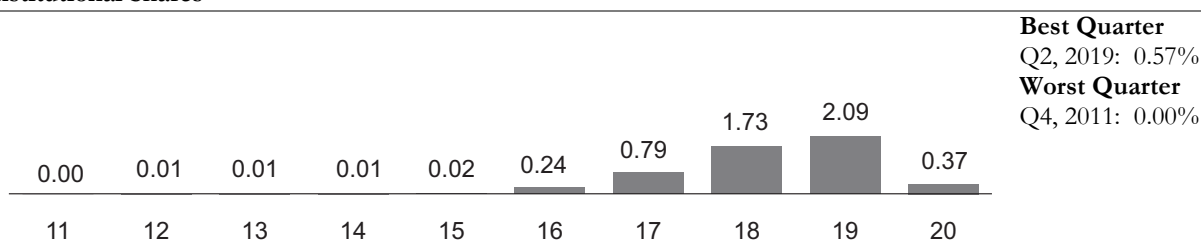
The following bar chart and table provide some indication of the risks of investing in the fund. The bar chart shows changes in the performance of the fund's Institutional shares from year to year. The table shows the average annual total returns of the fund's Institutional shares over time. The fund's past performance is not necessarily an indication of how the fund will perform in the future. More recent performance information may be available at [www.dreyfus.com](http://www.dreyfus.com).



---

**Year-by-Year Total Returns** as of 12/31 each year (%)**Institutional Shares**

---



The year-to-date total return of the fund's Institutional shares as of March 31, 2021 was 0.01%.

---

**Average Annual Total Returns** as of 12/31/20

	1 Year	5 Years	10 Years
<b>Institutional Shares</b>	0.37%	1.04%	0.52%

For the current yield for Institutional shares call toll-free 1-800-346-3621. Individuals or entities for whom institutions may purchase or redeem shares should call the institution directly.

---

**Portfolio Management**

---

The fund is managed by Dreyfus Cash Investment Strategies, a division of BNY Mellon Investment Adviser, Inc., the fund's investment adviser.

---

**Purchase and Sale of Fund Shares**

---

The fund's Institutional shares are designed generally for institutional investors, acting for themselves or in a fiduciary, advisory, agency, brokerage, custodial or similar capacity. Institutional shares of the fund also may be purchased directly by individuals. In general, the fund's minimum initial investment for Institutional shares is \$10,000,000 with no minimum subsequent investment, unless: (a) the investor has invested at least \$10,000,000 in the aggregate among the fund and any of the Cash Management Funds, the Preferred Funds or Dreyfus Treasury and Agency Liquidity Money Market Fund; or (b) the investor has, in the opinion of BNY Mellon Institutional Services, adequate intent and availability of assets to reach a future aggregate level of investment of \$10,000,000 in such funds. You may sell (redeem) your shares on any business day by telephone or compatible computer facility.

---

**Tax Information**

---

The fund's distributions are taxable as ordinary income or capital gains, except when your investment is through a U.S. tax-advantaged investment plan (in which case you may be taxed upon withdrawal of your investment from such account).

---

**Payments to Broker-Dealers and Other Financial Intermediaries**

---

If you purchase shares through a broker-dealer or other financial intermediary (such as a bank), the fund's distributor and its related companies may pay the intermediary for the sale of fund shares and related services. To the extent that the intermediary may receive lesser or no payments in connection with the sale of other investments, the payments from the fund's distributor and its related companies may create a potential conflict of interest by influencing the broker-dealer or other intermediary and your financial representative to recommend the fund over the other investments. This potential conflict of interest may be addressed by policies, procedures or practices adopted by the financial intermediary. As there may be many different policies, procedures or practices adopted by different intermediaries to address the manner in which compensation is earned through the sale of investments or the provision of related services, the compensation rates and other payment arrangements that may apply to a financial intermediary and its representatives may vary by intermediary. Ask your financial representative or visit your financial intermediary's website for more information.

# Fund Summary

## Dreyfus Government Securities Cash Management

### Investment Objective

The fund seeks as high a level of current income as is consistent with the preservation of capital and the maintenance of liquidity.

### Fees and Expenses

This table describes the fees and expenses that you may pay if you buy, hold and sell shares of the fund. **You may pay other fees, such as brokerage commissions and other fees to financial intermediaries, which are not reflected in the table and examples below.**

<b>Annual Fund Operating Expenses</b> (expenses that you pay each year as a percentage of the value of your investment)	
	<b>Institutional Shares</b>
Management fees	.20
Other expenses:	
<i>Shareholder services fees</i>	.00*
<i>Miscellaneous other expenses</i>	.01
Total other expenses	.01
Total annual fund operating expenses	.21

\* Amount represents less than .01%.

### Example

The Example is intended to help you compare the cost of investing in the fund with the cost of investing in other mutual funds. The Example assumes that you invest \$10,000 in the fund for the time periods indicated and then hold or redeem all of your shares at the end of those periods. The Example also assumes that your investment has a 5% return each year and that the fund's operating expenses remain the same. Although your actual costs may be higher or lower, based on these assumptions your costs would be:

	<b>1 Year</b>	<b>3 Years</b>	<b>5 Years</b>	<b>10 Years</b>
Institutional Shares	\$22	\$68	\$118	\$268

### Principal Investment Strategy

The fund pursues its investment objective by investing only in government securities (i.e., securities issued or guaranteed as to principal and interest by the U.S. government or its agencies or instrumentalities, including those with floating or variable rates of interest) and cash. The fund is a money market fund subject to the maturity, quality, liquidity and diversification requirements of Rule 2a-7 under the Investment Company Act of 1940, as amended, and seeks to maintain a stable share price of \$1.00.

The fund is a "government money market fund," as that term is defined in Rule 2a-7, and as such is required to invest at least 99.5% of its total assets in securities issued or guaranteed as to principal and interest by the U.S. government or its agencies or instrumentalities, repurchase agreements collateralized solely by cash and/or government securities, and cash. The fund normally invests at least 80% of its net assets in government securities (i.e., under normal circumstances, the fund will not invest more than 20% of its net assets in cash), and typically invests exclusively in government securities.

The securities in which the fund invests include those backed by the full faith and credit of the U.S. government, which include U.S. Treasury securities as well as securities issued by certain agencies of the U.S. government, and those that are neither insured nor guaranteed by the U.S. government. While the fund is permitted to invest in the full range of government securities, the fund currently is managed so that income paid by the fund will be exempt from state and

local taxes. Because rules regarding the state and local taxation of dividend income can differ from state to state, investors are urged to consult their tax advisers about the taxation of the fund's dividend income in their state and locality.

## Principal Risks

---

An investment in the fund is not a bank deposit. It is not insured or guaranteed by the Federal Deposit Insurance Corporation (FDIC) or any other government agency. You could lose money by investing in the fund. Although the fund seeks to preserve the value of your investment at \$1.00 per share, it cannot guarantee it will do so. The fund's yield will fluctuate as the short-term securities in its portfolio mature or are sold and the proceeds are reinvested in securities with different interest rates. The fund currently is not permitted to impose a fee upon the sale of shares (a "liquidity fee") or temporarily suspend redemptions (a redemption "gate") under distressed conditions as some other types of money market funds are, and the fund's board has no intention to impose a liquidity fee or redemption gate. Neither BNY Mellon Investment Adviser, Inc. nor its affiliates have a legal obligation to provide financial support to the fund, and you should not expect that BNY Mellon Investment Adviser, Inc. or its affiliates will provide financial support to the fund at any time. The following are the principal risks that could reduce the fund's income level and/or share price:

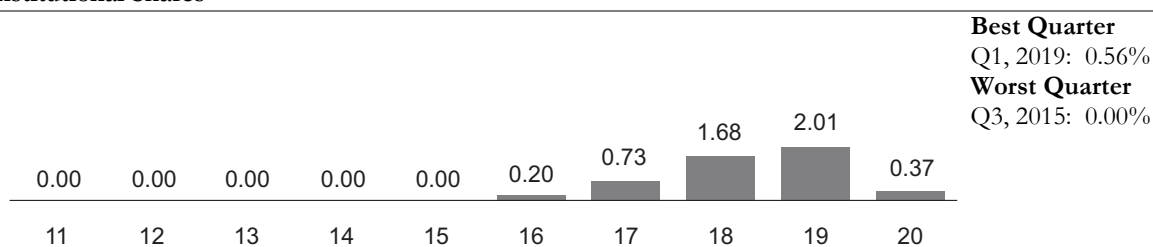
- *Interest rate risk.* This risk refers to the decline in the prices of fixed-income securities that may accompany a rise in the overall level of interest rates. A sharp and unexpected rise in interest rates could impair the fund's ability to maintain a stable net asset value. Very low or negative interest rates may magnify interest rate risk. In addition, a low interest rate environment may prevent the fund from providing a positive yield or paying fund expenses out of fund assets and could impair the fund's ability to maintain a stable net asset value. Interest rates in the United States currently are at or near historic lows due to market forces and actions of the Board of Governors of the Federal Reserve System in the U.S., primarily in response to the novel coronavirus (COVID-19) pandemic and resultant market disruptions. Changing interest rates, including rates that fall below zero, may have unpredictable effects on markets, may result in heightened market volatility and may detract from fund performance. For floating and variable rate obligations, there may be a lag between an actual change in the underlying interest rate benchmark and the reset time for an interest payment of such an obligation, which could harm or benefit the fund, depending on the interest rate environment or other circumstances.
- *Liquidity risk.* When there is little or no active trading market for specific types of securities, it can become more difficult to sell the securities in a timely manner at or near their perceived value. In such a market, the value of such securities may fall dramatically, potentially impairing the fund's ability to maintain a stable net asset value.
- *U.S. Treasury securities risk.* A security backed by the U.S. Treasury or the full faith and credit of the United States is guaranteed only as to the timely payment of interest and principal when held to maturity, but the market prices for such securities are not guaranteed and will fluctuate.
- *Government securities risk.* Not all obligations of the U.S. government, its agencies and instrumentalities are backed by the full faith and credit of the U.S. Treasury. Some obligations are backed only by the credit of the issuing agency or instrumentality, and in some cases there may be some risk of default by the issuer. Any guarantee by the U.S. government or its agencies or instrumentalities of a security held by the fund does not apply to the market value of such security or to shares of the fund itself.
- *Market risk.* The value of the securities in which the fund invests may be affected by political, regulatory, economic and social developments. Events such as war, acts of terrorism, the spread of infectious illness or other public health issue, recessions, or other events could have a significant impact on the fund and its investments. Recent examples include pandemic risks related to COVID-19 and aggressive measures taken world-wide in response by governments, including closing borders, restricting international and domestic travel, and the imposition of prolonged quarantines of large populations, and by businesses, including changes to operations and reducing staff.

## Performance

---

The following bar chart and table provide some indication of the risks of investing in the fund. The bar chart shows changes in the performance of the fund's Institutional shares from year to year. The table shows the average annual total returns of the fund's Institutional shares over time. The fund's past performance is not necessarily an indication of how the fund will perform in the future. More recent performance information may be available at [www.dreyfus.com](http://www.dreyfus.com).

---

**Year-by-Year Total Returns** as of 12/31 each year (%)**Institutional Shares**

The year-to-date total return of the fund's Institutional shares as of March 31, 2021 was 0.00%.

---

**Average Annual Total Returns** as of 12/31/20

	<b>1 Year</b>	<b>5 Years</b>	<b>10 Years</b>
<b>Institutional Shares</b>	0.37%	0.99%	0.50%

For the current yield for Institutional shares call toll-free 1-800-346-3621. Individuals or entities for whom institutions may purchase or redeem shares should call the institution directly.

---

**Portfolio Management**

The fund is managed by Dreyfus Cash Investment Strategies, a division of BNY Mellon Investment Adviser, Inc., the fund's investment adviser.

---

**Purchase and Sale of Fund Shares**

The fund's Institutional shares are designed generally for institutional investors, acting for themselves or in a fiduciary, advisory, agency, brokerage, custodial or similar capacity. Institutional shares of the fund also may be purchased directly by individuals. In general, the fund's minimum initial investment for Institutional shares is \$10,000,000 with no minimum subsequent investment, unless: (a) the investor has invested at least \$10,000,000 in the aggregate among the fund and any of the Cash Management Funds, the Preferred Funds or Dreyfus Treasury and Agency Liquidity Money Market Fund; or (b) the investor has, in the opinion of BNY Mellon Institutional Services, adequate intent and availability of assets to reach a future aggregate level of investment of \$10,000,000 in such funds. You may sell (redeem) your shares on any business day by telephone or compatible computer facility.

---

**Tax Information**

The fund's distributions are taxable as ordinary income or capital gains, except when your investment is through a U.S. tax-advantaged investment plan (in which case you may be taxed upon withdrawal of your investment from such account).

---

**Payments to Broker-Dealers and Other Financial Intermediaries**

If you purchase shares through a broker-dealer or other financial intermediary (such as a bank), the fund's distributor and its related companies may pay the intermediary for the sale of fund shares and related services. To the extent that the intermediary may receive lesser or no payments in connection with the sale of other investments, the payments from the fund's distributor and its related companies may create a potential conflict of interest by influencing the broker-dealer or other intermediary and your financial representative to recommend the fund over the other investments. This potential conflict of interest may be addressed by policies, procedures or practices adopted by the financial intermediary. As there may be many different policies, procedures or practices adopted by different intermediaries to address the manner in which compensation is earned through the sale of investments or the provision of related services, the compensation rates and other payment arrangements that may apply to a financial intermediary and its representatives may vary by intermediary. Ask your financial representative or visit your financial intermediary's website for more information.

# Fund Summary

## Dreyfus Treasury Obligations Cash Management

### Investment Objective

The fund seeks as high a level of current income as is consistent with the preservation of capital and the maintenance of liquidity.

### Fees and Expenses

This table describes the fees and expenses that you may pay if you buy, hold and sell shares of the fund. **You may pay other fees, such as brokerage commissions and other fees to financial intermediaries, which are not reflected in the table and examples below.**

<b>Annual Fund Operating Expenses</b> (expenses that you pay each year as a percentage of the value of your investment)	<b>Institutional Shares</b>
Management fees	.20
Other expenses:	
<i>Shareholder services fees</i>	.00*
<i>Miscellaneous other expenses</i>	.01
Total other expenses	.01
Total annual fund operating expenses	.21

\* Amount represents less than .01%.

### Example

The Example is intended to help you compare the cost of investing in the fund with the cost of investing in other mutual funds. The Example assumes that you invest \$10,000 in the fund for the time periods indicated and then hold or redeem all of your shares at the end of those periods. The Example also assumes that your investment has a 5% return each year and that the fund's operating expenses remain the same. Although your actual costs may be higher or lower, based on these assumptions your costs would be:

	<b>1 Year</b>	<b>3 Years</b>	<b>5 Years</b>	<b>10 Years</b>
Institutional Shares	\$22	\$68	\$118	\$268

### Principal Investment Strategy

The fund pursues its investment objective by investing only in U.S. Treasury securities, repurchase agreements collateralized solely by U.S. Treasury securities and cash. The fund is a money market fund subject to the maturity, quality, liquidity and diversification requirements of Rule 2a-7 under the Investment Company Act of 1940, as amended, and seeks to maintain a stable share price of \$1.00.

The fund is a "government money market fund," as that term is defined in Rule 2a-7, and as such is required to invest at least 99.5% of its total assets in securities issued or guaranteed as to principal and interest by the U.S. government or its agencies or instrumentalities, repurchase agreements collateralized solely by cash and/or government securities, and cash. The fund normally invests at least 80% of its net assets in U.S. Treasury securities and repurchase agreements collateralized solely by U.S. Treasury securities (i.e., under normal circumstances, the fund will not invest more than 20% of its net assets in cash or repurchase agreements collateralized by cash), and typically invests exclusively in such securities.

### Principal Risks

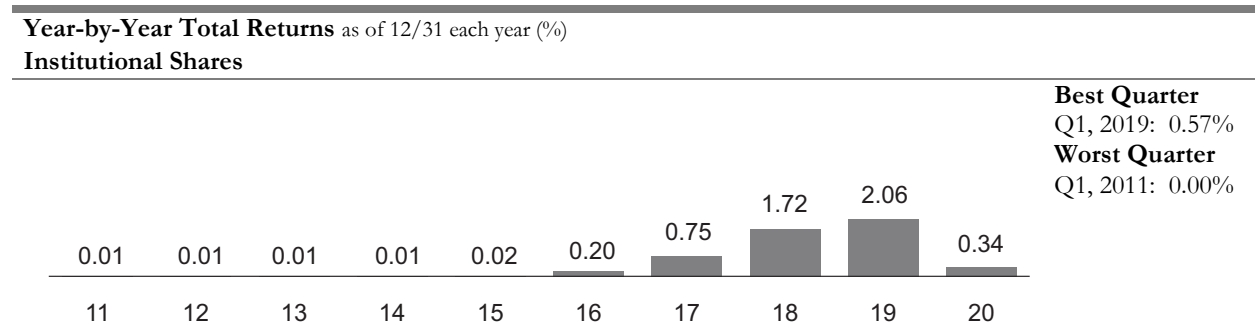
An investment in the fund is not a bank deposit. It is not insured or guaranteed by the Federal Deposit Insurance Corporation (FDIC) or any other government agency. You could lose money by investing in the fund. Although the

fund seeks to preserve the value of your investment at \$1.00 per share, it cannot guarantee it will do so. The fund's yield will fluctuate as the short-term securities in its portfolio mature or are sold and the proceeds are reinvested in securities with different interest rates. The fund currently is not permitted to impose a fee upon the sale of shares (a "liquidity fee") or temporarily suspend redemptions (a redemption "gate") under distressed conditions as some other types of money market funds are, and the fund's board has no intention to impose a liquidity fee or redemption gate. Neither BNY Mellon Investment Adviser, Inc. nor its affiliates have a legal obligation to provide financial support to the fund, and you should not expect that BNY Mellon Investment Adviser, Inc. or its affiliates will provide financial support to the fund at any time. The following are the principal risks that could reduce the fund's income level and/or share price:

- *Interest rate risk.* This risk refers to the decline in the prices of fixed-income securities that may accompany a rise in the overall level of interest rates. A sharp and unexpected rise in interest rates could impair the fund's ability to maintain a stable net asset value. Very low or negative interest rates may magnify interest rate risk. In addition, a low interest rate environment may prevent the fund from providing a positive yield or paying fund expenses out of fund assets and could impair the fund's ability to maintain a stable net asset value. Interest rates in the United States currently are at or near historic lows due to market forces and actions of the Board of Governors of the Federal Reserve System in the U.S., primarily in response to the novel coronavirus (COVID-19) pandemic and resultant market disruptions. Changing interest rates, including rates that fall below zero, may have unpredictable effects on markets, may result in heightened market volatility and may detract from fund performance.
- *Liquidity risk.* When there is little or no active trading market for specific types of securities, it can become more difficult to sell the securities in a timely manner at or near their perceived value. In such a market, the value of such securities may fall dramatically, potentially impairing the fund's ability to maintain a stable net asset value.
- *U.S. Treasury securities risk.* A security backed by the U.S. Treasury or the full faith and credit of the United States is guaranteed only as to the timely payment of interest and principal when held to maturity, but the market prices for such securities are not guaranteed and will fluctuate.
- *Repurchase agreement counterparty risk.* The fund is subject to the risk that a counterparty in a repurchase agreement could fail to honor the terms of the agreement.
- *Market risk.* The value of the securities in which the fund invests may be affected by political, regulatory, economic and social developments. Events such as war, acts of terrorism, the spread of infectious illness or other public health issue, recessions, or other events could have a significant impact on the fund and its investments. Recent examples include pandemic risks related to COVID-19 and aggressive measures taken world-wide in response by governments, including closing borders, restricting international and domestic travel, and the imposition of prolonged quarantines of large populations, and by businesses, including changes to operations and reducing staff.

## Performance

The following bar chart and table provide some indication of the risks of investing in the fund. The bar chart shows changes in the performance of the fund's Institutional shares from year to year. The table shows the average annual total returns of the fund's Institutional shares over time. The fund's past performance is not necessarily an indication of how the fund will perform in the future. More recent performance information may be available at [www.dreyfus.com](http://www.dreyfus.com).



The year-to-date total return of the fund's Institutional shares as of March 31, 2021 was 0.01%.

<b>Average Annual Total Returns</b> as of 12/31/20			
	<b>1 Year</b>	<b>5 Years</b>	<b>10 Years</b>
<b>Institutional Shares</b>	0.34%	1.01%	0.51%

*For the current yield for Institutional shares call toll-free 1-800-346-3621. Individuals or entities for whom institutions may purchase or redeem shares should call the institution directly.*

## **Portfolio Management**

---

The fund is managed by Dreyfus Cash Investment Strategies, a division of BNY Mellon Investment Adviser, Inc., the fund's investment adviser.

## **Purchase and Sale of Fund Shares**

---

The fund's Institutional shares are designed generally for institutional investors, acting for themselves or in a fiduciary, advisory, agency, brokerage, custodial or similar capacity. Institutional shares of the fund also may be purchased directly by individuals. In general, the fund's minimum initial investment for Institutional shares is \$10,000,000 with no minimum subsequent investment, unless: (a) the investor has invested at least \$10,000,000 in the aggregate among the fund and any of the Cash Management Funds, the Preferred Funds or Dreyfus Treasury and Agency Liquidity Money Market Fund; or (b) the investor has, in the opinion of BNY Mellon Institutional Services, adequate intent and availability of assets to reach a future aggregate level of investment of \$10,000,000 in such funds. You may sell (redeem) your shares on any business day by telephone or compatible computer facility.

## **Tax Information**

---

The fund's distributions are taxable as ordinary income or capital gains, except when your investment is through a U.S. tax-advantaged investment plan (in which case you may be taxed upon withdrawal of your investment from such account).

## **Payments to Broker-Dealers and Other Financial Intermediaries**

---

If you purchase shares through a broker-dealer or other financial intermediary (such as a bank), the fund's distributor and its related companies may pay the intermediary for the sale of fund shares and related services. To the extent that the intermediary may receive lesser or no payments in connection with the sale of other investments, the payments from the fund's distributor and its related companies may create a potential conflict of interest by influencing the broker-dealer or other intermediary and your financial representative to recommend the fund over the other investments. This potential conflict of interest may be addressed by policies, procedures or practices adopted by the financial intermediary. As there may be many different policies, procedures or practices adopted by different intermediaries to address the manner in which compensation is earned through the sale of investments or the provision of related services, the compensation rates and other payment arrangements that may apply to a financial intermediary and its representatives may vary by intermediary. Ask your financial representative or visit your financial intermediary's website for more information.

# Fund Summary

## Dreyfus Treasury Securities Cash Management

### Investment Objective

The fund seeks as high a level of current income as is consistent with the preservation of capital and the maintenance of liquidity.

### Fees and Expenses

This table describes the fees and expenses that you may pay if you buy, hold and sell shares of the fund. **You may pay other fees, such as brokerage commissions and other fees to financial intermediaries, which are not reflected in the table and examples below.**

Annual Fund Operating Expenses (expenses that you pay each year as a percentage of the value of your investment)	
	Institutional Shares
Management fees	.20
Other expenses:	
<i>Shareholder services fees</i>	.00*
<i>Miscellaneous other expenses</i>	.01
Total other expenses	.01
Total annual fund operating expenses	.21

\* Amount represents less than .01%.

### Example

The Example is intended to help you compare the cost of investing in the fund with the cost of investing in other mutual funds. The Example assumes that you invest \$10,000 in the fund for the time periods indicated and then hold or redeem all of your shares at the end of those periods. The Example also assumes that your investment has a 5% return each year and that the fund's operating expenses remain the same. Although your actual costs may be higher or lower, based on these assumptions your costs would be:

	1 Year	3 Years	5 Years	10 Years
Institutional Shares	\$22	\$68	\$118	\$268

### Principal Investment Strategy

The fund pursues its investment objective by investing only in U.S. Treasury securities and cash. The fund is a money market fund subject to the maturity, quality, liquidity and diversification requirements of Rule 2a-7 under the Investment Company Act of 1940, as amended, and seeks to maintain a stable share price of \$1.00.

The fund is a "government money market fund," as that term is defined in Rule 2a-7, and as such is required to invest at least 99.5% of its total assets in securities issued or guaranteed as to principal and interest by the U.S. government or its agencies or instrumentalities, repurchase agreements collateralized solely by cash and/or government securities, and cash. The fund normally invests at least 80% of its net assets in U.S. Treasury securities (i.e., under normal circumstances, the fund will not invest more than 20% of its net assets in cash), and typically invests exclusively in U.S. Treasury securities.

By investing exclusively in U.S. Treasury securities, income paid by the fund generally will be exempt from state and local taxes. Because rules regarding the state and local taxation of dividend income can differ from state to state, investors are urged to consult their tax advisers about the taxation of the fund's dividend income in their state and locality.



## Principal Risks

An investment in the fund is not a bank deposit. It is not insured or guaranteed by the Federal Deposit Insurance Corporation (FDIC) or any other government agency. You could lose money by investing in the fund. Although the fund seeks to preserve the value of your investment at \$1.00 per share, it cannot guarantee it will do so. The fund's yield will fluctuate as the short-term securities in its portfolio mature or are sold and the proceeds are reinvested in securities with different interest rates. The fund currently is not permitted to impose a fee upon the sale of shares (a "liquidity fee") or temporarily suspend redemptions (a redemption "gate") under distressed conditions as some other types of money market funds are, and the fund's board has no intention to impose a liquidity fee or redemption gate. Neither BNY Mellon Investment Adviser, Inc. nor its affiliates have a legal obligation to provide financial support to the fund, and you should not expect that BNY Mellon Investment Adviser, Inc. or its affiliates will provide financial support to the fund at any time. The following are the principal risks that could reduce the fund's income level and/or share price:

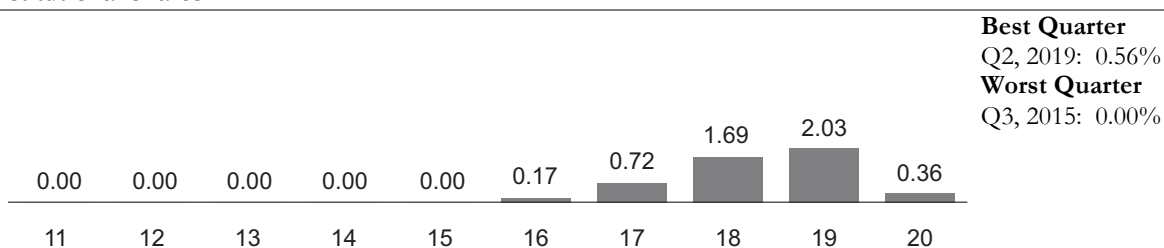
- *Interest rate risk.* This risk refers to the decline in the prices of fixed-income securities that may accompany a rise in the overall level of interest rates. A sharp and unexpected rise in interest rates could impair the fund's ability to maintain a stable net asset value. Very low or negative interest rates may magnify interest rate risk. In addition, a low interest rate environment may prevent the fund from providing a positive yield or paying fund expenses out of fund assets and could impair the fund's ability to maintain a stable net asset value. Interest rates in the United States currently are at or near historic lows due to market forces and actions of the Board of Governors of the Federal Reserve System in the U.S., primarily in response to the novel coronavirus (COVID-19) pandemic and resultant market disruptions. Changing interest rates, including rates that fall below zero, may have unpredictable effects on markets, may result in heightened market volatility and may detract from fund performance.
- *Liquidity risk.* When there is little or no active trading market for specific types of securities, it can become more difficult to sell the securities in a timely manner at or near their perceived value. In such a market, the value of such securities may fall dramatically, potentially impairing the fund's ability to maintain a stable net asset value.
- *U.S. Treasury securities risk.* A security backed by the U.S. Treasury or the full faith and credit of the United States is guaranteed only as to the timely payment of interest and principal when held to maturity, but the market prices for such securities are not guaranteed and will fluctuate.
- *Market risk.* The value of the securities in which the fund invests may be affected by political, regulatory, economic and social developments. Events such as war, acts of terrorism, the spread of infectious illness or other public health issue, recessions, or other events could have a significant impact on the fund and its investments. Recent examples include pandemic risks related to COVID-19 and aggressive measures taken world-wide in response by governments, including closing borders, restricting international and domestic travel, and the imposition of prolonged quarantines of large populations, and by businesses, including changes to operations and reducing staff.

## Performance

The following bar chart and table provide some indication of the risks of investing in the fund. The bar chart shows changes in the performance of the fund's Institutional shares from year to year. The table shows the average annual total returns of the fund's Institutional shares over time. The fund's past performance is not necessarily an indication of how the fund will perform in the future. More recent performance information may be available at [www.dreyfus.com](http://www.dreyfus.com).

**Year-by-Year Total Returns** as of 12/31 each year (%)

**Institutional Shares**



The year-to-date total return of the fund's Institutional shares as of March 31, 2021 was 0.00%.

---

**Average Annual Total Returns** as of 12/31/20

	<b>1 Year</b>	<b>5 Years</b>	<b>10 Years</b>
<b>Institutional Shares</b>	0.36%	0.99%	0.49%

*For the current yield for Institutional shares call toll-free 1-800-346-3621. Individuals or entities for whom institutions may purchase or redeem shares should call the institution directly.*

---

**Portfolio Management**

The fund is managed by Dreyfus Cash Investment Strategies, a division of BNY Mellon Investment Adviser, Inc., the fund's investment adviser.

---

**Purchase and Sale of Fund Shares**

The fund's Institutional shares are designed generally for institutional investors, acting for themselves or in a fiduciary, advisory, agency, brokerage, custodial or similar capacity. Institutional shares of the fund also may be purchased directly by individuals. In general, the fund's minimum initial investment for Institutional shares is \$10,000,000 with no minimum subsequent investment, unless: (a) the investor has invested at least \$10,000,000 in the aggregate among the fund and any of the Cash Management Funds, the Preferred Funds or Dreyfus Treasury and Agency Liquidity Money Market Fund; or (b) the investor has, in the opinion of BNY Mellon Institutional Services, adequate intent and availability of assets to reach a future aggregate level of investment of \$10,000,000 in such funds. You may sell (redeem) your shares on any business day by telephone or compatible computer facility.

---

**Tax Information**

The fund's distributions are taxable as ordinary income or capital gains, except when your investment is through a U.S. tax-advantaged investment plan (in which case you may be taxed upon withdrawal of your investment from such account).

---

**Payments to Broker-Dealers and Other Financial Intermediaries**

If you purchase shares through a broker-dealer or other financial intermediary (such as a bank), the fund's distributor and its related companies may pay the intermediary for the sale of fund shares and related services. To the extent that the intermediary may receive lesser or no payments in connection with the sale of other investments, the payments from the fund's distributor and its related companies may create a potential conflict of interest by influencing the broker-dealer or other intermediary and your financial representative to recommend the fund over the other investments. This potential conflict of interest may be addressed by policies, procedures or practices adopted by the financial intermediary. As there may be many different policies, procedures or practices adopted by different intermediaries to address the manner in which compensation is earned through the sale of investments or the provision of related services, the compensation rates and other payment arrangements that may apply to a financial intermediary and its representatives may vary by intermediary. Ask your financial representative or visit your financial intermediary's website for more information.

# Fund Summary

## Dreyfus Tax Exempt Cash Management

### Investment Objective

The fund seeks as high a level of current income exempt from federal income tax as is consistent with the preservation of capital and the maintenance of liquidity.

### Fees and Expenses

This table describes the fees and expenses that you may pay if you buy, hold and sell shares of the fund. **You may pay other fees, such as brokerage commissions and other fees to financial intermediaries, which are not reflected in the table and examples below.**

Annual Fund Operating Expenses (expenses that you pay each year as a percentage of the value of your investment)	
	Institutional Shares
Management fees	.20
Other expenses:	
<i>Shareholder services fees</i>	.01
<i>Miscellaneous other expenses</i>	.04
Total other expenses	.05
Total annual fund operating expenses	.25

### Example

The Example is intended to help you compare the cost of investing in the fund with the cost of investing in other mutual funds. The Example assumes that you invest \$10,000 in the fund for the time periods indicated and then hold or redeem all of your shares at the end of those periods. The Example also assumes that your investment has a 5% return each year and that the fund's operating expenses remain the same. Although your actual costs may be higher or lower, based on these assumptions your costs would be:

	1 Year	3 Years	5 Years	10 Years
Institutional Shares	\$26	\$80	\$141	\$318

### Principal Investment Strategy

To pursue its goal, the fund normally invests substantially all of its assets in short-term, high quality municipal obligations that provide income exempt from federal income taxes. The fund also may invest in high quality, short-term structured notes, which are derivative instruments whose value is tied to underlying municipal obligations.

Although the fund seeks to provide income exempt from federal income tax, income from some of the fund's holdings may be subject to the federal alternative minimum tax.

The fund is a money market fund subject to the maturity, quality, liquidity and diversification requirements of Rule 2a-7 under the Investment Company Act of 1940, as amended, although the net asset value of the fund's shares will "float," meaning the net asset value will fluctuate with changes in the values of the fund's portfolio securities.

### Principal Risks

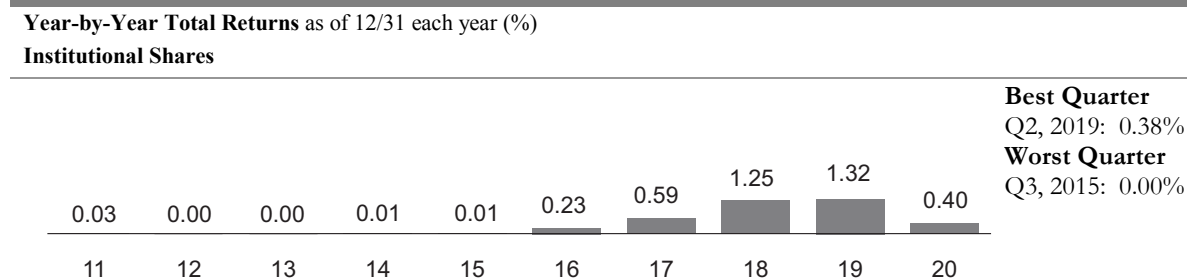
An investment in the fund is not a bank deposit. It is not insured or guaranteed by the Federal Deposit Insurance Corporation (FDIC) or any other government agency. You could lose money by investing in the fund. Because the share price of the fund will fluctuate, when you sell your shares they may be worth more or less than what you originally paid for them. The fund's yield will fluctuate as the short-term securities in its portfolio mature or are sold and the proceeds are reinvested in securities with different interest rates. The fund may impose a fee upon the sale of shares (a

"liquidity fee") or may temporarily suspend your ability to sell shares (a redemption "gate") if the fund's liquidity falls below required minimums because of market conditions or other factors. Neither BNY Mellon Investment Adviser, Inc. nor its affiliates have a legal obligation to provide financial support to the fund, and you should not expect that BNY Mellon Investment Adviser, Inc. or its affiliates will provide financial support to the fund at any time. The following are the principal risks that could reduce the fund's income level and/or share price:

- *Interest rate risk.* This risk refers to the decline in the prices of fixed-income securities that may accompany a rise in the overall level of interest rates. A sharp and unexpected rise in interest rates could cause the fund's share price to decline. Very low or negative interest rates may magnify interest rate risk. In addition, a low interest rate environment may prevent the fund from providing a positive yield or paying fund expenses out of fund assets and could lead to a decline in the fund's share price. Interest rates in the United States currently are at or near historic lows due to market forces and actions of the Board of Governors of the Federal Reserve System in the U.S., primarily in response to the novel coronavirus (COVID-19) pandemic and resultant market disruptions. Changing interest rates, including rates that fall below zero, may have unpredictable effects on markets, may result in heightened market volatility and may detract from fund performance.
- *Liquidity risk.* When there is little or no active trading market for specific types of securities, it can become more difficult to sell the securities in a timely manner at or near their perceived value. In such a market, the value of such securities may fall dramatically, potentially leading to a decline in the fund's share price.
- *Credit risk.* Failure of an issuer of a security to make timely interest or principal payments when due, or a decline or perception of a decline in the credit quality of the security, can cause the security's price to fall. Although the fund invests only in high quality debt securities, the credit quality of the securities held by the fund can change rapidly in certain market environments, and the default or a significant price decline of a single holding could have the potential to cause significant deterioration of the fund's net asset value.
- *Floating net asset value risk.* The fund does not maintain a stable net asset value per share. The net asset value of the fund's shares will be calculated to four decimal places and will "float," meaning the net asset value will fluctuate with changes in the values of the fund's portfolio securities. You could lose money by investing in the fund.
- *Liquidity fee and/or redemption gate risk.* The fund may impose a fee upon the sale of your shares (a "liquidity fee") or may temporarily suspend your ability to sell shares (a redemption "gate") if the fund's liquidity falls below required minimums because of unusual market conditions, an unusually high volume of redemption requests, redemptions by a few large investors, or other reasons. If a liquidity fee is imposed by the fund, it would reduce the amount you will receive upon the redemption of your shares. A "gate" will suspend your ability to redeem your shares while the gate is imposed and may prevent the fund from being able to pay redemption proceeds within the allowable time period stated in this prospectus.
- *Municipal securities risk.* Municipal securities may be fully or partially backed or enhanced by the taxing authority of a local government, by the current or anticipated revenues from a specific project or specific assets, or by the credit of, or liquidity enhancement provided by, a private issuer. Special factors, such as legislative changes, and state and local economic and business developments, may adversely affect the yield and/or value of the fund's investments in municipal securities. In addition, the cost associated with combating the outbreak of COVID-19 and its negative impact on tax revenues has adversely affected the financial condition of many state and local governments. The effects of this outbreak could affect the ability of state and local governments to make payments on debt obligations when due and could adversely impact the value of their bonds.
- *Structured notes risk.* Structured notes, a type of derivative instrument, can be volatile, and the possibility of default by the financial institution or counterparty may be greater for these instruments than for other types of money market instruments. Structured notes typically are purchased in privately negotiated transactions from financial institutions and, thus, an active trading market for such instruments may not exist.
- *Tax risk.* To be tax-exempt, municipal obligations generally must meet certain regulatory requirements. If any such municipal obligation fails to meet these regulatory requirements, the interest received by the fund from its investment in such obligations and distributed to fund shareholders will be taxable.
- *Market risk.* The value of the securities in which the fund invests may be affected by political, regulatory, economic and social developments. Events such as war, acts of terrorism, the spread of infectious illness or other public health issue, recessions, or other events could have a significant impact on the fund and its investments. Recent examples include pandemic risks related to COVID-19 and aggressive measures taken world-wide in response by governments, including closing borders, restricting international and domestic travel, and the imposition of prolonged quarantines of large populations, and by businesses, including changes to operations and reducing staff.

## Performance

The following bar chart and table provide some indication of the risks of investing in the fund. The bar chart shows changes in the performance of the fund's Institutional shares from year to year. The table shows the average annual total returns of the fund's Institutional shares over time. The fund's past performance is not necessarily an indication of how the fund will perform in the future. More recent performance information may be available at [www.dreyfus.com](http://www.dreyfus.com).



The year-to-date total return of the fund's Institutional shares as of March 31, 2021 was 0.00%.

**Average Annual Total Returns** as of 12/31/20

	1 Year	5 Years	10 Years
<b>Institutional Shares</b>	0.40%	0.76%	0.38%

For the current yield for Institutional shares call toll-free 1-800-346-3621. Individuals or entities for whom institutions may purchase or redeem shares should call the institution directly.

## Portfolio Management

The fund is managed by Dreyfus Cash Investment Strategies, a division of BNY Mellon Investment Adviser, Inc., the fund's investment adviser.

## Purchase and Sale of Fund Shares

The fund's Institutional shares are designed for institutional investors, acting for themselves or in a fiduciary, advisory, agency, brokerage, custodial or similar capacity. Institutional shares of the fund may not be purchased directly by individuals, although institutions may purchase shares for accounts maintained by individuals. In general, the fund's minimum initial investment for Institutional shares is \$10,000,000 with no minimum subsequent investment, unless: (a) the investor has invested at least \$10,000,000 in the aggregate among the fund and any of the Cash Management Funds, the Preferred Funds or Dreyfus Treasury and Agency Liquidity Money Market Fund; or (b) the investor has, in the opinion of BNY Mellon Institutional Services, adequate intent and availability of assets to reach a future aggregate level of investment of \$10,000,000 in such funds. You may sell (redeem) your shares on any business day by telephone or compatible computer facility.

## Tax Information

The fund anticipates that dividends paid by the fund generally will be exempt from federal income tax. However, the fund may realize and distribute taxable income and capital gains from time to time as a result of the fund's normal investment activities, and income from some of the fund's holdings may be subject to the federal alternative minimum tax.

## Payments to Broker-Dealers and Other Financial Intermediaries

If you purchase shares through a broker-dealer or other financial intermediary (such as a bank), the fund's distributor and its related companies may pay the intermediary for the sale of fund shares and related services. To the extent that the intermediary may receive lesser or no payments in connection with the sale of other investments, the payments from the fund's distributor and its related companies may create a potential conflict of interest by influencing the broker-dealer or other intermediary and your financial representative to recommend the fund over the other investments. This potential conflict of interest may be addressed by policies, procedures or practices adopted by the financial intermediary. As there may be many different policies, procedures or practices adopted by different intermediaries to address the

manner in which compensation is earned through the sale of investments or the provision of related services, the compensation rates and other payment arrangements that may apply to a financial intermediary and its representatives may vary by intermediary. Ask your financial representative or visit your financial intermediary's website for more information.

# Fund Details

## Goal and Approach

---

Each fund is a money market mutual fund with a separate investment portfolio. The operations and results of one fund are unrelated to those of any other fund. This combined prospectus has been prepared for the convenience of investors so that investors can consider a number of investment choices in one document.

Each fund is a money market fund, subject to the maturity, quality, liquidity and diversification requirements of Rule 2a-7 under the Investment Company Act of 1940, as amended.

Dreyfus Government Cash Management, Dreyfus Government Securities Cash Management, Dreyfus Treasury Obligations Cash Management and Dreyfus Treasury Securities Cash Management have each been designated as a "government money market fund" (Government Funds). As Government Funds, each fund is required to invest at least 99.5% of its total assets in securities issued or guaranteed as to principal and interest by the U.S. government or its agencies or instrumentalities, repurchase agreements collateralized solely by cash and/or government securities, and cash.

The Government Funds seek to maintain a stable share price of \$1.00 (CNAV Funds).

Dreyfus Cash Management and Dreyfus Tax Exempt Cash Management have not been designated as either a Government Fund or as a "retail money market fund." Therefore, the net asset value per share of these funds will "float," meaning the net asset value will fluctuate with changes in the values of the fund's portfolio securities (FNAV Funds).

Each fund seeks as high a level of current income as is consistent with the preservation of capital and the maintenance of liquidity. In addition, as a tax exempt fund, Dreyfus Tax Exempt Cash Management seeks current income exempt from federal income tax.

Dreyfus Cash Management invests in a range of money market instruments. Dreyfus Government Securities Cash Management typically invests exclusively in government securities and Dreyfus Treasury Securities Cash Management typically invests exclusively in U.S. Treasury securities. Each of Dreyfus Government Securities Cash Management and Dreyfus Treasury Securities Cash Management currently is managed so that income paid by the fund will be exempt from state and local taxes. Because rules regarding the state and local taxation of dividend income can differ from state to state, investors are urged to consult their tax advisers about the taxation of the fund's dividend income in their state and locality. Dreyfus Government Cash Management invests only in government securities, repurchase agreements collateralized solely by government securities and/or cash, and cash. The securities in which Dreyfus Government Cash Management invests include those backed by the full faith and credit of the U.S. government and those that are neither insured nor guaranteed by the U.S. government. Securities backed by the full faith and credit of the U.S. government include U.S. Treasury securities as well as securities issued by certain agencies of the U.S. government, such as the Government National Mortgage Association. Dreyfus Treasury Obligations Cash Management typically invests exclusively in U.S. Treasury securities and repurchase agreements collateralized solely by U.S. Treasury securities.

Dreyfus Tax Exempt Cash Management normally invests substantially all of its assets in short-term, high quality municipal obligations that provide income exempt from federal income taxes. It is a fundamental policy of Dreyfus Tax Exempt Cash Management, which may be changed only with the approval of the fund's board and shareholders, that the fund normally invest at least 80% of its net assets in municipal obligations that provide income exempt from federal income tax. Dreyfus Tax Exempt Cash Management also may invest in high quality, short term structured notes, which are derivative instruments whose value is tied to underlying municipal obligations. To the extent such derivative instruments have similar economic characteristics to municipal obligations as described in the fund's policy with respect to the investment of at least 80% of its net assets, the market value of such instruments will be included in the 80% policy. Although Dreyfus Tax Exempt Cash Management seeks to provide income exempt from federal income taxes, income from some of the fund's holdings may be subject to the federal alternative minimum tax. Dreyfus Tax Exempt Cash Management also may invest temporarily in high quality, taxable money market instruments, including when the portfolio manager believes acceptable municipal obligations are not available for investment. During such periods, the fund may not achieve its investment objective.

The repurchase agreements in which certain funds may invest may include tri-party repurchase agreements executed through a third party bank that provides payment administration, collateral custody and management services to the parties to the repurchase agreements.

Among other requirements, each fund is required to hold at least 30% of its assets in cash, U.S. Treasury securities, certain other government securities with remaining maturities of 60 days or less, or securities that can readily be converted into cash within five business days. In addition, each fund, other than Dreyfus Tax Exempt Cash Management, is required to hold at least 10% of its assets in cash, U.S. Treasury securities or securities that can readily be converted into cash within one business day. Each fund must maintain an average dollar-weighted portfolio maturity of 60 days or less and a maximum weighted average life to maturity of 120 days. Dreyfus Cash Management and Dreyfus Tax Exempt Cash Management are limited to investing in high quality securities that the fund's investment adviser, BNY Mellon Investment Adviser, Inc., has determined present minimal credit risks.

In response to liquidity needs or unusual market conditions, each fund may hold all or a significant portion of its total assets in cash for temporary defensive purposes. This may result in a lower current yield and prevent the fund from achieving its investment objective.

## Investment Risks

---

An investment in a fund is not a bank deposit. It is not insured or guaranteed by the FDIC or any other government agency. You could lose money by investing in a fund. A fund's yield will fluctuate as the short-term securities in its portfolio mature or are sold and the proceeds are reinvested in securities with different interest rates. Neither BNY Mellon Investment Adviser, Inc. nor its affiliates have a legal obligation to provide financial support to a fund, and you should not expect that BNY Mellon Investment Adviser, Inc. or its affiliates will provide financial support to a fund at any time.

Although each CNAV Fund seeks to preserve the value of your investment at \$1.00 per share, it cannot guarantee it will do so.

Because the share price of each FNAV Fund will fluctuate, when you sell your shares they may be worth more or less than what you originally paid for them.

An FNAV Fund may impose a fee upon the sale of shares (a "liquidity fee") or may temporarily suspend your ability to sell shares (a redemption "gate") if the fund's liquidity falls below required minimums because of market conditions or other factors. Each Government Fund currently is not permitted to impose liquidity fees or redemption gates, and the fund's board has no intention to impose a liquidity fee or redemption gate.

The following are the principal risks that could reduce a fund's income level and/or share price:

- *Interest rate risk.* Prices of fixed-income securities tend to move inversely with changes in interest rates. Interest rate risk refers to the decline in the prices of fixed-income securities that may accompany a rise in the overall level of interest rates. A sharp and unexpected rise in interest rates could cause the FNAV Fund's share price to decline or, for a CNAV Fund, impair the fund's ability to maintain a stable net asset value. A low interest rate environment may prevent the fund from providing a positive yield or paying fund expenses out of fund assets and lead to a decline in the FNAV Fund's share price or, for a CNAV Fund, impair the fund's ability to maintain a stable net asset value. Interest rates in the United States currently are at or near historic lows due to market forces and actions of the Board of Governors of the Federal Reserve System in the U.S., primarily in response to the COVID-19 pandemic and resultant market disruptions. Changing interest rates, including rates that fall below zero, may have unpredictable effects on markets, may result in heightened market volatility and may detract from fund performance. In such an interest rate environment, the fund may be subject to a greater risk of principal decline from rising interest rates. For floating and variable rate obligations, there may be a lag between an actual change in the underlying interest rate benchmark and the reset time for an interest payment of such an obligation, which could harm or benefit the fund, depending on the interest rate environment or other circumstances. In a rising interest rate environment, for example, a floating or variable rate obligation that does not reset immediately would prevent the fund from taking full advantage of the rising interest rates in a timely manner. However, in a declining interest rate environment, the fund may benefit from a lag due to an obligation's interest rate payment not being immediately impacted by a decline in interest rates. Certain floating and variable rate obligations have an interest rate floor feature, which prevents the interest rate payable by the security from dropping below a specified level as compared to a reference interest rate, such as the London Interbank Offered Rate (LIBOR). LIBOR may cease to be available or appropriate for use by the end of 2021. The unavailability or replacement of LIBOR may affect the value, liquidity or return on such investments and may result in costs incurred in connection with closing out positions and entering into new trades. Any pricing



adjustments to the fund's investments resulting from a substitute reference rate may adversely affect the fund's performance.

- *Liquidity risk.* When there is little or no active trading market for specific types of securities, it can become more difficult to sell the securities in a timely manner at or near their perceived value. In such a market, the value of such securities may fall dramatically, potentially causing an FNAV Fund's share price to decline or, for a CNAV Fund, impairing the fund's ability to maintain a stable net asset value. To meet redemption requests, the fund may be forced to sell securities at an unfavorable time and/or under unfavorable conditions, which may adversely affect an FNAV Fund's share price or, for a CNAV Fund, impair the fund's ability to maintain a stable net asset value.

#### **Risks Applicable to Dreyfus Cash Management:**

- *Banking industry risk.* The risks generally associated with concentrating investments (i.e., hold 25% or more of its total assets) in the banking industry include interest rate risk, credit risk, and regulatory developments relating to the banking industry such as extensive governmental regulation and/or nationalization that affects the scope of their activities, the prices they can charge and the amount of capital they must maintain; adverse effects on profitability due to increases in interest rates or loan losses; severe price competition; and increased inter-industry consolidation and competition. An adverse development in the banking industry (domestic or foreign) may affect the value of the fund's investments more than if such investments were not invested to such a degree in the banking industry. Banks may be particularly susceptible to certain economic factors such as interest rate changes, adverse developments in the real estate market, fiscal, regulatory and monetary policy and general economic cycles. For example, deteriorating economic and business conditions can disproportionately impact companies in the banking industry due to increased defaults on payments by borrowers. Moreover, political and regulatory changes can affect the operations and financial results of companies in the banking industry, potentially imposing additional costs and expenses or restricting the types of business activities of these companies.
- *Foreign investment risk.* The risks generally associated with dollar-denominated foreign investments include economic and political developments, seizure or nationalization of deposits, imposition of taxes or other restrictions on payment of principal and interest. The imposition of sanctions, confiscations, trade restrictions (including tariffs) and other government restrictions by the United States and other governments, or from problems in share registration, settlement or custody, may also result in losses. Investments by the fund in foreign securities, whether issued by a foreign government, bank, corporation or other issuer, may present a greater degree of risk than investments in securities of domestic issuers because of less publicly-available financial and other information, more or less securities regulation, potential imposition of foreign withholding and other taxes, war, expropriation or other adverse governmental actions. Foreign banks and their foreign branches are not regulated by U.S. banking authorities, and generally are not bound by the accounting, auditing and financial reporting standards applicable to U.S. banks. The legal remedies for investors may be more limited than the remedies available in the United States. In addition, changes in the exchange rate of a foreign currency relative to the U.S. dollar (e.g., weakening of the currency against the U.S. dollar) may adversely affect the ability of a foreign issuer to pay interest and repay principal on an obligation. In addition, the fund will be subject to the risk that an issuer of foreign sovereign debt or the government authorities that control the repayment of the debt may be unable or unwilling to repay the principal or interest when due.
- *Asset-backed securities risk.* Asset-backed securities are subject to credit, prepayment and extension risk, and may be more volatile, less liquid and more difficult to price accurately than more traditional debt securities. General downturns in the economy could cause the value of asset-backed securities to fall. Asset-backed securities are often subject to more rapid repayment than their stated maturity date would indicate as a result of the pass-through of prepayments of principal on the underlying loans. During periods of declining interest rates, prepayment of loans underlying asset-backed securities can be expected to accelerate. Accordingly, the fund's ability to maintain positions in such securities will be affected by reductions in the principal amount of such securities resulting from prepayments, and its ability to reinvest the returns of principal at comparable yields is subject to generally prevailing interest rates at that time. The value of some asset-backed securities may be particularly sensitive to changes in prevailing interest rates.
- *Market risk.* The value of the securities in which the fund invests may be affected by political, regulatory, economic and social developments, and developments that impact specific economic sectors, industries or segments of the market. In addition, turbulence in financial markets and reduced liquidity in equity, credit and/or fixed income markets may negatively affect many issuers, which could adversely affect the fund. Global economies and financial markets are becoming increasingly interconnected, and conditions and events in one country, region or financial market may adversely impact issuers in a different country, region or financial market. These risks may be magnified if certain events or developments adversely interrupt the global supply chain; in these and other circumstances, such risks might affect companies world-wide. Recent examples include pandemic risks related to COVID-19 and aggressive measures taken world-wide in response by governments, including closing borders, restricting international and domestic travel, and the imposition of prolonged quarantines of large populations, and by businesses, including

changes to operations and reducing staff. The effects of COVID-19 have contributed to increased volatility in global markets and will likely affect certain companies, industries and market sectors more dramatically than others. The COVID-19 pandemic has had, and any other outbreak of an infectious disease or other serious public health concern could have, a significant negative impact on economic and market conditions and could trigger a prolonged period of global economic slowdown. To the extent the fund may overweight its investments in certain companies, industries or market sectors, such positions will increase the fund's exposure to risk of loss from adverse developments affecting those companies, industries or sectors.

#### **Risks Applicable to Dreyfus Cash Management and Dreyfus Tax Exempt Cash Management:**

- *Credit risk.* Failure of an issuer of a security to make timely interest or principal payments when due, or a decline or perception of a decline in the credit quality of the security, can cause the security's price to fall, lowering the value of the fund's investment in such security. Although the fund invests only in high quality debt securities, any of the fund's holdings could have its credit rating downgraded or could default. The credit quality and prices of the securities held by the fund can change rapidly in certain market environments, and the default or a significant price decline of a single holding could have the potential to cause significant deterioration of the fund's net asset value.
- *Municipal securities risk.* Municipal securities may be fully or partially backed or enhanced by the taxing authority of a local government, by the current or anticipated revenues from a specific project or specific assets, or by the credit of, or liquidity enhancement provided by, a private issuer. Special factors, such as legislative changes, and state and local economic and business developments, may adversely affect the yield and/or value of the fund's investments in municipal securities. Other factors include the general conditions of the municipal securities market, the size of the particular offering, the maturity of the obligation and the rating of the issue. The municipal securities market can be susceptible to increases in volatility and decreases in liquidity. Liquidity can decline unpredictably in response to overall economic conditions or credit tightening. Increases in volatility and decreases in liquidity may be caused by a rise in interest rates (or the expectation of a rise in interest rates). Changes in economic, business or political conditions relating to a particular municipal project, municipality, or state, territory or possession of the United States in which the fund invests may lead to a decline in the fund's share price. Various types of municipal securities are often related in such a way that political, economic or business developments affecting one obligation could affect other municipal securities held by the fund. In addition, the cost associated with combating the outbreak of COVID-19 and its negative impact on tax revenues has adversely affected the financial condition of many state and local governments. The effects of this outbreak could affect the ability of state and local governments to make payments on debt obligations when due and could adversely impact the value of their bonds, which could negatively impact the performance of the fund.

#### **Risks Applicable to Dreyfus Government Cash Management, Dreyfus Government Securities Cash Management, Dreyfus Treasury Obligations Cash Management and Dreyfus Treasury Securities Cash Management:**

- *Market risk.* The value of the securities in which the fund invests may be affected by political, regulatory, economic and social developments. Events such as war, acts of terrorism, the spread of infectious illness or other public health issue, recessions, or other events could have a significant impact on the fund and its investments. Recent examples include pandemic risks related to COVID-19 and aggressive measures taken world-wide in response by governments, including closing borders, restricting international and domestic travel, and the imposition of prolonged quarantines of large populations, and by businesses, including changes to operations and reducing staff. The COVID-19 pandemic has had, and any other outbreak of an infectious disease or other serious public health concern could have, a significant negative impact on economic and market conditions and could trigger a prolonged period of global economic slowdown.

#### **Risks Applicable to Funds That May Invest in U.S. Treasury Securities:**

- *U.S. Treasury securities risk.* A security backed by the U.S. Treasury or the full faith and credit of the United States is guaranteed only as to the timely payment of interest and principal when held to maturity, but the market prices for such securities are not guaranteed and will fluctuate. In addition, such guarantees do not extend to shares of the fund itself. Because U.S. Treasury securities trade actively outside the United States, their prices may rise and fall as changes in global economic conditions affect the demand for these securities.

#### **Risks Applicable to Funds That May Invest in U.S. Government Securities:**

- *Government securities risk.* Not all obligations of the U.S. government, its agencies and instrumentalities are backed by the full faith and credit of the U.S. Treasury. Some obligations are backed only by the credit of the issuing agency or instrumentality, and in some cases there may be some risk of default by the issuer. Any guarantee by the U.S. government or its agencies or instrumentalities of a security held by the fund does not apply to the market value of such security or to shares of the fund itself. A security backed by the U.S. Treasury or the full faith and credit of the

United States is guaranteed only as to the timely payment of interest and principal when held to maturity. In addition, because many types of U.S. government securities trade actively outside the United States, their prices may rise and fall as changes in global economic conditions affect the demand for these securities.

#### **Risks Applicable to Funds That May Enter Into Repurchase Agreements:**

- *Repurchase agreement counterparty risk.* The fund is subject to the risk that a counterparty in a repurchase agreement and/or, for a tri-party repurchase agreement, the third party bank providing payment administration, collateral custody and management services for the transaction, could fail to honor the terms of the agreement.

#### **Risks Applicable to Dreyfus Tax Exempt Cash Management:**

- *Structured notes risk.* Structured notes, a type of derivative instrument, can be volatile, and the possibility of default by the financial institution or counterparty may be greater for these instruments than for other types of money market instruments. Structured notes typically are purchased in privately negotiated transactions from financial institutions and, thus, an active trading market for such instruments may not exist.
- *Tax risk.* To be tax-exempt, municipal obligations generally must meet certain regulatory requirements. If any such municipal obligation fails to meet these regulatory requirements, the interest received by the fund from its investment in such obligations and distributed to fund shareholders will be taxable.
- *Market risk.* The value of the securities in which the fund invests may be affected by political, regulatory, economic and social developments. Events such as war, acts of terrorism, the spread of infectious illness or other public health issue, recessions, or other events could have a significant impact on the fund and its investments. Recent examples include pandemic risks related to COVID-19 and aggressive measures taken world-wide in response by governments, including closing borders, restricting international and domestic travel, and the imposition of prolonged quarantines of large populations, and by businesses, including changes to operations and reducing staff. The COVID-19 pandemic has had, and any other outbreak of an infectious disease or other serious public health concern could have, a significant negative impact on economic and market conditions and could trigger a prolonged period of global economic slowdown.

#### **Risks Applicable to the FNAV Funds:**

- *Floating net asset value risk.* The fund does not maintain a stable net asset value per share. The net asset value of the fund's shares will be calculated to four decimal places and will "float," meaning the net asset value will fluctuate with changes in the values of the fund's portfolio securities. You could lose money by investing in the fund.
- *Liquidity fee and/or redemption gate risk.* The fund may impose a fee upon the sale of your shares (a "liquidity fee") or may temporarily suspend your ability to sell shares (a redemption "gate") if the fund's liquidity falls below required minimums because of unusual market conditions, an unusually high volume of redemption requests, redemptions by a few large investors, or other reasons. If a liquidity fee is imposed by the fund, it would reduce the amount you will receive upon the redemption of your shares. A "gate" will suspend your ability to redeem your shares while the gate is imposed and may prevent the fund from being able to pay redemption proceeds within the allowable time period stated in this prospectus. If the fund receives a liquidity fee, it is possible that it may return the fee to shareholders in the form of a distribution at a later time. When a fee or a gate is in place, the fund may elect to stop selling shares or to impose additional conditions on the purchase of shares.

## **Management**

---

The funds are managed by Dreyfus Cash Investment Strategies, a division of BNY Mellon Investment Adviser, Inc. (BNYM Investment Adviser), the funds' investment adviser, 240 Greenwich Street, New York, New York 10286. BNYM Investment Adviser manages approximately \$313 billion in 129 mutual fund portfolios. For the fiscal year ended January 31, 2021, each of the funds paid BNYM Investment Adviser a management fee at the effective annual rate set forth in the table below. Certain funds paid BNYM Investment Adviser an effective management fee at a lower rate due to a voluntary undertaking by BNYM Investment Adviser to waive fees and/or reimburse fund expenses during the period.

Name of Fund	Effective Management Fee (as a percentage of average daily net assets)
Dreyfus Cash Management	.11
Dreyfus Government Cash Management	.15
Dreyfus Government Securities Cash Management	.20
Dreyfus Treasury Obligations Cash Management	.17
Dreyfus Treasury Securities Cash Management	.18
Dreyfus Tax Exempt Cash Management	.14

A discussion regarding the basis for the board's approving each fund's management agreement with BNYM Investment Adviser is available in the fund's semiannual report for the six-month period ended July 31, 2020. BNYM Investment Adviser is the primary mutual fund business of The Bank of New York Mellon Corporation (BNY Mellon), a global investments company dedicated to helping its clients manage and service their financial assets throughout the investment lifecycle. Whether providing financial services for institutions, corporations or individual investors, BNY Mellon delivers informed investment management and investment services in 35 countries. BNY Mellon is a leading investment management and investment services company, uniquely focused to help clients manage and move their financial assets in the rapidly changing global marketplace. BNY Mellon has \$41.7 trillion in assets under custody and administration and \$2.2 trillion in assets under management. BNY Mellon is the corporate brand of The Bank of New York Mellon Corporation. BNY Mellon Investment Management is one of the world's leading investment management organizations, and one of the top U.S. wealth managers, encompassing BNY Mellon's affiliated investment management firms, wealth management services and global distribution companies. Additional information is available at [www.bnymellon.com](http://www.bnymellon.com).

The asset management philosophy of BNYM Investment Adviser is based on the belief that discipline and consistency are important to investment success. For each fund, BNYM Investment Adviser seeks to establish clear guidelines for portfolio management and to be systematic in making decisions. This approach is designed to provide each fund with a distinct, stable identity.

BNY Mellon Securities Corporation (BNYMSC), a wholly-owned subsidiary of BNYM Investment Adviser, serves as distributor of the fund and of the other funds in the BNY Mellon Family of Funds. Any shareholder services fees are paid to BNYMSC for the provision of shareholder account service and maintenance. BNYM Investment Adviser or BNYMSC may provide cash payments out of its own resources to financial intermediaries that sell shares of funds in the BNY Mellon Family of Funds or provide other services. Such payments are separate from any shareholder services fees or other expenses that may be paid by a fund to those financial intermediaries. Because those payments are not made by fund shareholders or the fund, the fund's total expense ratio will not be affected by any such payments. These payments may be made to financial intermediaries, including affiliates, that provide shareholder servicing, sub-administration, recordkeeping and/or sub-transfer agency services, marketing support and/or access to sales meetings, sales representatives and management representatives of the financial intermediary. Cash compensation also may be paid from BNYM Investment Adviser's or BNYMSC's own resources to financial intermediaries for inclusion of a fund on a sales list, including a preferred or select sales list or in other sales programs. These payments sometimes are referred to as "revenue sharing." From time to time, BNYM Investment Adviser or BNYMSC also may provide cash or non-cash compensation to financial intermediaries or their representatives in the form of occasional gifts; occasional meals, tickets or other entertainment; support for due diligence trips; educational conference sponsorships; support for recognition programs; technology or infrastructure support; and other forms of cash or non-cash compensation permissible under broker-dealer regulations. In some cases, these payments or compensation may create an incentive for a financial intermediary or its employees to recommend or sell shares of the fund to you. This potential conflict of interest may be addressed by policies, procedures or practices that are adopted by the financial intermediary. As there may be many different policies, procedures or practices adopted by different intermediaries to address the manner in which compensation is earned through the sale of investments or the provision of related services, the compensation rates and other payment arrangements that may apply to a financial intermediary and its representatives may vary by intermediary. Please contact your financial representative for details about any payments they or their firm may receive in connection with the sale of fund shares or the provision of services to the fund.

Institutional shares of Dreyfus Cash Management are subject to an annual shareholder services plan fee of 0.10% of the value of the fund's average daily net assets attributable to Institutional shares payable to the fund's distributor in respect of the provision of personal services to shareholders, such as answering shareholder inquiries regarding the fund, and/or the maintenance of shareholder accounts. The fund's distributor may pay financial intermediaries from the fees it receives under the shareholder services plan for the provision of such services by the financial intermediaries to their clients who are beneficial owners of Institutional shares of Dreyfus Cash Management. In addition, Institutional shares of Dreyfus Cash Management and Institutional shares of each other fund are subject to an annual shareholder services plan fee of up to 0.05% and up to 0.25%, respectively, of the value of the fund's average daily net assets attributable to

Institutional shares to reimburse the fund's distributor for expenses related to providing such personal services to shareholders and/or the maintenance of shareholder accounts.

The fund, BNYM Investment Adviser and BNYMSC have each adopted a code of ethics that permits its personnel, subject to such code, to invest in securities, including securities that may be purchased or held by the fund. Each code of ethics restricts the personal securities transactions of employees, and requires portfolio managers and other investment personnel to comply with the code's preclearance and disclosure procedures. The primary purpose of the respective codes is to ensure that personal trading by employees is done in a manner that does not disadvantage the fund or other client accounts.

# Shareholder Guide

## Buying and Selling Shares

---

Each fund's Institutional shares are designed generally for institutional investors, acting for themselves or in a fiduciary, advisory, agency, brokerage, custodial or similar capacity. Institutional shares of Dreyfus Government Cash Management, Dreyfus Government Securities Cash Management, Dreyfus Treasury Obligations Cash Management and Dreyfus Treasury Securities Cash Management also may be purchased directly by individuals. Generally, each investor will be required to open a single master account with a fund for all purposes. In certain cases, a fund may request investors to maintain separate master accounts for shares held by the investor (i) for its own account, for the account of other institutions and for accounts for which the institution acts as a fiduciary, and (ii) for accounts for which the investor acts in some other capacity. An institution may arrange with a fund's transfer agent for sub-accounting services and will be charged directly for the cost of such services. Institutions purchasing Institutional shares for the benefit of their clients may impose policies, limitations and fees which are different from those described in this prospectus. The funds offer other classes of shares, which are described in separate prospectuses. Institutions purchasing fund shares on behalf of their clients determine which class is suitable for their clients.

Because Dreyfus Tax Exempt Cash Management seeks tax exempt income, it is not recommended for purchase in IRAs or other qualified retirement plans.

Your price for Institutional shares is the net asset value (NAV) per share.

*Applicable to each FNAV Fund:*

The fund's NAV per share is based on the market value of the investments held by the fund and will be calculated to four decimals. BNYM Investment Adviser generally values fixed-income investments based on values supplied by an independent pricing service approved by the fund's board. The pricing service's procedures are reviewed under the general supervision of the board. If market quotations or official closing prices or valuations from a pricing service are not readily available, or are determined not to reflect accurately fair value, the fund may value those investments at fair value as determined in accordance with procedures approved by the fund's board. Fair value of investments may be determined by the fund's board, its pricing committee or its valuation committee in good faith using such information as it deems appropriate under the circumstances.

*Applicable to each CNAV Fund:*

The fund's portfolio securities are valued at amortized cost, which does not take into account unrealized gains or losses. As a result, portfolio securities are valued at their acquisition cost, adjusted over time based on the discounts or premiums reflected in their purchase price. The fund uses this valuation method pursuant to Rule 2a-7 under the Investment Company Act of 1940, as amended, in order to be able to maintain a price of \$1.00 per share.

When calculating its NAV, the fund compares the NAV using amortized cost to its NAV using available market quotations or market equivalents, which generally are provided by an independent pricing service approved by a fund's board. The pricing service's procedures are reviewed under the general supervision of the board.

## How to Buy Shares

*Applicable to all funds:*

The fund's NAV is calculated on any day the New York Stock Exchange (NYSE) is open. In addition, the fund's NAV will be calculated on any day the NYSE is closed but the Federal Reserve Bank is open and the Securities Industry and Financial Markets Association (SIFMA) recommends that fixed income securities markets be open for the day or a portion of the day. In the event the NYSE and fixed income securities markets are closed but the Federal Reserve Bank is open, Dreyfus Cash Management may, but is not required to, calculate its NAV and accept purchase and redemption requests.

The time at which the fund's NAV is calculated, and the trading deadline for orders "in proper form" (as defined below), is reflected in the table below. The fund reserves the right to change the time at which the fund's NAV is calculated and the trading deadline to an earlier time than stated below in the case of an emergency, if regular trading on the NYSE is

restricted or closes early, the fixed income securities markets or the Federal Reserve Bank close early, or as otherwise permitted by the Securities and Exchange Commission.

<b>Name of Fund</b>	<b>Fund Calculation of NAV/Trading Deadline for Orders in Proper Form</b>
Dreyfus Cash Management	9:00 a.m., 12:00 p.m. and 3:00 p.m.
Dreyfus Government Cash Management	5:00 p.m.
Dreyfus Government Securities Cash Management	3:00 p.m.
Dreyfus Treasury Obligations Cash Management	5:00 p.m.
Dreyfus Treasury Securities Cash Management	3:00 p.m.
Dreyfus Tax Exempt Cash Management	12:00 p.m.

*All times are Eastern time.*

*Applicable to the FNAV Funds:*

Orders in proper form received and accepted by the fund will become effective at the next NAV determined. Orders received in proper form and accepted by 3:00 p.m., with respect to Dreyfus Cash Management, or by 12:00 p.m., with respect to Dreyfus Tax Exempt Cash Management, will receive the dividend declared on that day. Investors whose orders for Dreyfus Cash Management are received in proper form and accepted after 3:00 p.m. will be priced at the NAV determined at 9:00 a.m., and will begin to accrue dividends, on the following business day. An order to purchase shares received by the fund will be deemed to be "in proper form" if the fund receives "federal funds" or other immediately available funds promptly thereafter. Unless other arrangements have been agreed in advance, the fund generally expects to receive the funds within two hours after the time at which the fund's NAV is next calculated after the order is received by the fund. The fund generally does not allow financial intermediaries to serve as the fund's agent for the receipt of orders.

*Applicable to each CNAV Fund:*

Orders in proper form received and accepted by the fund or a financial intermediary that serves as agent for the fund by the time of day at which the fund calculates its NAV will become effective at the NAV determined on that day and shares purchased will receive the dividend declared on that day. An order to purchase shares received by the fund will be deemed to be "in proper form" if the fund receives "federal funds" or other immediately available funds promptly thereafter. Unless other arrangements have been agreed in advance, the fund generally expects to receive the funds within two hours after the order is received by the fund or a financial intermediary that serves as agent for the fund, or by 6:00 p.m., Eastern time, whichever is earlier. Orders submitted through a financial intermediary that does not serve as an agent for the fund are priced at the fund's NAV next calculated after the fund receives the order in proper form from the intermediary and accepts it, which may not occur on the day the order is submitted to the intermediary.

*Applicable to all funds:*

An order in proper form received and accepted after the time of day at which a fund determines its NAV will be priced at the NAV determined on the following business day and will begin to accrue dividends on such business day. If payment is not received within the appropriate time period, the fund reserves the right to cancel the purchase order at its discretion, and the investor would be liable for any resulting losses or expenses incurred by the fund or the fund's transfer agent, including interest charges.

**By Wire.** To open an account by wire, or purchase additional shares, please contact a BNY Mellon Institutional Services representative by calling 1-800-346-3621 for more information.

**By Computer.** You may input new account data and retrieve an account number for your records by accessing The Lion Remote System. Be sure to print a report of transactions for your records. Please contact the BNY Mellon Institutional Services by calling 1-800-346-3621 for more information about The Lion Remote System or any other compatible computerized trading system.

The minimum initial investment in Institutional shares is \$10,000,000, with no minimum subsequent investment, unless: (a) the investor has invested at least \$10,000,000 in the aggregate among the fund and any of the Cash Management Funds or the Preferred Funds listed under "Services for Fund Investors Fund Exchanges" or Dreyfus Treasury and Agency Liquidity Money Market Fund; or (b) the investor has, in the opinion of BNY Mellon Institutional Services, adequate intent and availability of assets to reach a future aggregate level of investment of \$10,000,000 in such funds.

## How to Sell Shares

You may sell (redeem) shares at any time by telephone or compatible computer facility.

Your shares will be priced at the next determined NAV. If a request for redemption is received and accepted by the time of day at which a fund determines its NAV, the proceeds of the redemption ordinarily will be transmitted by wire in federal funds on the same day, and the shares will not receive the dividend declared on that day. Under certain circumstances (i.e., during periods of stressed market conditions or in cases of very large redemption requests), however, the fund may pay a portion or all of the redemption proceeds on the next business day. If the request is received and accepted after the time of day at which a fund determines its NAV, or is transmitted through the National Securities Clearing Corporation, the shares will receive the dividend declared on that day, and the proceeds of redemption ordinarily will be transmitted by wire in federal funds on the next business day.

The processing of redemptions may be suspended, and the delivery of redemption proceeds may be delayed beyond seven days, depending on the circumstances, for any period: (i) during which the NYSE is closed (other than on holidays or weekends), or during which trading on the NYSE is restricted; (ii) when an emergency exists that makes the disposal of securities owned by a fund or the determination of the fair value of the fund's net assets not reasonably practicable; or (iii) as permitted by order of the Securities and Exchange Commission for the protection of fund shareholders. For these purposes, the Securities and Exchange Commission determines the conditions under which trading shall be deemed to be restricted and an emergency shall be deemed to exist.

Additionally, each FNAV Fund may impose a fee upon the sale of your shares (a "liquidity fee") or may temporarily suspend your ability to sell shares (a redemption "gate") if the fund's liquidity falls below required minimums. See "Potential Restrictions on Fund Redemptions—Fees and Gates" below for more information.

Under normal circumstances, each fund expects to meet redemption requests by using cash it holds in its portfolio or selling portfolio securities to generate cash. In addition, pursuant to an interfund lending order granted by the Securities and Exchange Commission, each fund, except Dreyfus Treasury Securities Cash Management and Dreyfus Tax Exempt Cash Management, and certain other money market funds in the BNY Mellon Family of Funds, may borrow money from certain money market funds in the BNY Mellon Family of Funds for temporary or emergency purposes to meet redemption requests.

Each fund also reserves the right to pay redemption proceeds in securities rather than cash (i.e., "redeem in-kind"), if the amount redeemed is large enough to affect fund operations or the redemption request is during stressed market conditions. Investors are urged to call BNY Mellon Institutional Services before effecting any large transactions. Securities distributed in connection with any such redemption in-kind are expected to generally represent the investor's pro rata portion of assets held by the fund immediately prior to the redemption, with adjustments as may be necessary in connection with, for example, restricted securities, odd lots or fractional shares. Any securities distributed in-kind will remain exposed to market risk until sold, and you may incur taxable gain when selling the securities.

**By Telephone.** You may redeem shares by calling a BNY Mellon Institutional Services representative at 1-800-346-3621 to provide information about your transaction. Be sure the fund has your bank account information on file. Proceeds will be wired to your bank.

**By Computer.** You may redeem shares by accessing The Lion Remote System, or by other electronic means approved by BNY Mellon Institutional Services, to select from multiple wire instructions. Be sure to confirm your bank account information and print a report of the transaction for your records.

## Potential Restrictions on Fund Redemptions—Fees and Gates

*Applicable to each FNAV Fund:*

If the FNAV Fund's weekly liquid assets fall below 30% of its total assets, the fund's board, if it determines it is in the best interests of the fund, may impose liquidity fees of up to 2% of the value of the shares redeemed and/or redemption gates beginning as early as the same day. In addition, if the fund's weekly liquid assets fall below 10% of its total assets at the end of any business day, the fund must impose a 1% liquidity fee on shareholder redemptions, beginning on the next business day, unless the fund's board, including a majority of the board members who are not "interested persons" of the fund, determines that a lower or higher fee (not to exceed 2%), or no fee, is in the best interests of the fund. "Weekly liquid assets" include cash, government securities and securities readily convertible into cash within five business days. It is anticipated that the need to impose liquidity fees and redemption gates would occur very rarely, if at all, during times of extraordinary market stress.

Shareholders and financial intermediaries generally will be notified before a liquidity fee is imposed on the fund (although the fund's board, in its discretion, may elect otherwise). A liquidity fee would be imposed on all redemption requests (including redemptions by exchange into another fund) processed at the first NAV calculation following the announcement that the fund would impose a liquidity fee, which may be the same day. Liquidity fees generally would



operate to reduce the amount an investor receives upon redemption of fund shares, including upon an exchange of fund shares for shares of another fund, although under certain arrangements through which an intermediary remits the liquidity fee to the fund and charges an investor directly the fund will pay gross redemption proceeds to the intermediary. Liquidity fee proceeds would generally be retained by the fund and may be used to assist the fund to restore its market-based NAV per share. If the fund receives a liquidity fee, it is possible that it may return the fee to shareholders in the form of a distribution at a later time.

Shareholders and financial intermediaries will not be notified prior to the imposition of a redemption gate; however, financial intermediaries may be notified after the last NAV is calculated on the day the fund's board has made a decision to impose a redemption gate. Redemption requests (including redemptions by exchange into another fund) submitted while a redemption gate is imposed will be cancelled without further notice. If shareholders still wish to redeem their shares after a redemption gate has been lifted, they will need to submit a new redemption request at that time.

When a liquidity fee or a redemption gate is in place, the fund may elect to stop selling shares or to impose additional conditions on the purchase of shares.

The fund's board may, in its discretion, terminate a liquidity fee or redemption gate at any time if it believes such action to be in the best interest of the fund. In addition, a liquidity fee or redemption gate will automatically terminate at the beginning of the next business day once the fund's weekly liquid assets reach at least 30% of its total assets. Redemption gates may only last up to 10 business days in any 90-day period.

The imposition and termination of a liquidity fee or redemption gate would be announced on the fund's website ([www.dreyfus.com](http://www.dreyfus.com)). In addition, the fund will communicate such action through a disclosure supplement to this prospectus and may further communicate such action by other means.

The fund's board also may determine to permanently suspend redemptions and liquidate the fund if the fund, at the end of a business day, has less than 10% of its total assets invested in weekly liquid assets and the fund's board determines that it would not be in the best interests of the fund to continue operating. In the event that the board approves liquidation of the fund, BNYM Investment Adviser will commence the orderly liquidation of the fund's portfolio securities, following which the fund's net assets will be distributed to shareholders pursuant to a plan of liquidation adopted by the board.

## General Policies

---

Each fund and the funds' transfer agent are authorized to act on telephone or online instructions from any person representing himself or herself to be you and reasonably believed by the fund or the transfer agent to be genuine. You may be responsible for any fraudulent telephone or online order as long as the fund or the funds' transfer agent (as applicable) takes reasonable measures to confirm that the instructions are genuine.

Money market funds generally are used by investors for short-term investments, often in place of bank checking or savings accounts, or for cash management purposes. Investors value the ability to add and withdraw their funds quickly, without restriction. For this reason, although BNYM Investment Adviser discourages excessive trading and other abusive trading practices, the funds have not adopted policies and procedures, or imposed redemption fees or other restrictions such as minimum holding periods, to deter frequent purchases and redemptions of fund shares. BNYM Investment Adviser also believes that money market funds, such as the funds, are not typically targets of abusive trading practices. However, frequent purchases and redemptions of a fund's shares could increase the fund's transaction costs, such as market spreads and custodial fees, and may interfere with the efficient management of a fund's portfolio, which could detract from the fund's performance. Each fund reserves the right to reject any purchase or exchange request in whole or in part. Funds in the BNY Mellon Family of Funds that are not money market mutual funds have approved policies and procedures that are intended to discourage and prevent abusive trading practices in those mutual funds, which may apply to exchanges from or into a fund. If you plan to exchange your fund shares for shares of another fund in the BNY Mellon Family of Funds, please read the prospectus of that other fund for more information.

Each fund also reserves the right to:

- change or discontinue fund exchanges, or temporarily suspend exchanges during unusual market conditions
- change its minimum investment amount

Each fund also may process purchase and sale orders and calculate its NAV on days that the fund's primary trading markets are open and the fund's management determines to do so.

BNYM Investment Adviser generally will seek to place, over time, a majority of the aggregate dollar value of purchases and sales orders for Dreyfus Government Securities Cash Management's portfolio securities with dealers that are owned

by minorities, women, disabled persons, veterans and members of other qualified and recognized diversity and inclusion groups, subject to BNYM Investment Adviser's duty to seek the best execution for the fund's orders.

## **Escheatment**

If your account is deemed "abandoned" or "unclaimed" under state law, the fund may be required to "escheat" or transfer the assets in your account to the applicable state's unclaimed property administration. The state may sell escheated shares and, if you subsequently seek to reclaim your proceeds of liquidation from the state, you may only be able to recover the amount received when the shares were sold. It is your responsibility to ensure that you maintain a correct address for your account, keep your account active by contacting the fund's transfer agent or distributor by mail or telephone or accessing your account through the fund's website at least once a year, and promptly cash all checks for dividends, capital gains and redemptions. The fund, the fund's transfer agent and BNYM Investment Adviser and its affiliates will not be liable to shareholders or their representatives for good faith compliance with state escheatment laws.

## **Distributions and Taxes**

---

Each fund earns dividends, interest and other income from its investments, and distributes this income (less expenses) to shareholders as dividends. Each fund also realizes capital gains from its investments, and distributes these gains (less any losses) to shareholders as capital gain distributions. Each fund ordinarily declares dividends from its net investment income on each day its NAV is calculated and normally pays dividends monthly and capital gain distributions, if any, annually. Fund dividends and capital gain distributions will be reinvested in the fund unless you instruct the fund otherwise. There are no fees or sales charges imposed by the fund on reinvestments.

The taxable money market funds' distributions are taxable as ordinary income or capital gains (unless you are investing through a U.S. tax-advantaged investment plan, in which case taxes may be deferred). Dreyfus Tax Exempt Cash Management anticipates that dividends paid by the fund generally will be exempt from federal income tax. However, the fund may realize and distribute taxable income and capital gains from time to time as a result of the fund's normal investment activities. Distributions that are federally taxable as ordinary income or capital gains are generally subject to the respective state's income tax.

The tax status of any distribution generally is the same regardless of how long you have been in the fund and whether you reinvest your distributions or take them in cash.

The tax status of your distributions will be detailed in your annual tax statement from the fund. Because everyone's tax situation is unique, please consult your tax adviser before investing.

### *Applicable to each FNAV Fund:*

Because the share price of the FNAV Fund fluctuates, and because liquidity fees may be imposed on redemptions of the FNAV Fund's shares, including taxable exchanges into other funds, a shareholder may realize a gain or loss for tax purposes upon the redemption or exchange of fund shares. Generally, a shareholder of a money market fund, rather than realizing gain or loss upon each redemption or exchange of fund shares, may use a simplified method of accounting to annually recognize gain or loss (generally treated as short-term capital gain or loss) based on the changes in the aggregate value of the shareholder's shares in the fund during the computation period or periods (selected by the shareholder) comprising the shareholder's taxable year. Under prescribed rules, the change in value in the shareholder's fund shares for each computation period is adjusted appropriately to reflect any acquisitions and redemptions of fund shares by the shareholder during that computation period.

If a liquidity fee is imposed by the FNAV Fund, it generally would reduce the amount fund shareholders would receive upon the redemption of their shares, and would generally decrease the amount of any capital gain or increase the amount of any capital loss shareholders would recognize with respect to such redemptions. There is some degree of uncertainty with respect to the tax treatment of liquidity fees received by the fund, and such tax treatment may be the subject of future guidance issued by the Internal Revenue Service. If the fund receives liquidity fees, it will consider the appropriate tax treatment of such fees to the fund at such time.

## **Services for Fund Investors**

---

### **Fund Exchanges**

An investor may purchase, in exchange for Institutional shares of any fund, shares of the same class or certain other classes of the following funds, provided the investor meets the eligibility requirements for investing in the new share class: (i) any of the Cash Management Funds, which currently include Dreyfus Cash Management, Dreyfus Government Cash Management, Dreyfus Government Securities Cash Management, Dreyfus Tax Exempt Cash Management, Dreyfus Treasury Obligations Cash Management and Dreyfus Treasury Securities Cash Management; (ii) any of the

Preferred Funds, which currently include Dreyfus Institutional Preferred Government Money Market Fund, Dreyfus Institutional Preferred Treasury Obligations Fund, Dreyfus Institutional Preferred Treasury Securities Money Market Fund and Dreyfus Institutional Preferred Money Market Fund; or (iii) BNY Mellon Ultra Short Income Fund. For purposes of the exchange privilege, the investor will be deemed to have met the required minimum initial investment if the investor holds, in the aggregate, the required minimum amount in one or more of the Cash Management Funds or the Preferred Funds.

Your exchange request will be processed on the same business day it is received in proper form, provided that each fund is open at the time of the request (i.e., the request is received by the latest time each fund calculates its NAV for that business day). If the exchange is accepted at a time of day after one or both of the funds is closed (i.e., at a time after the NAV for the fund has been calculated for that business day), the exchange will be processed on the next business day. An investor should be sure to read the current prospectus for any fund into which the investor is exchanging before investing. Any new account established through an exchange generally will have the same privileges as the original account (as long as they are available). There is currently no fee for exchanges.

### **Conversion Feature**

Institutional shares of Dreyfus Cash Management may be converted into shares of another class of the fund, provided the investor meets the eligibility requirements for investing in the new share class. The fund reserves the right to refuse any conversion request.

### **Auto-Exchange Privilege**

Auto-Exchange privilege enables an investor to invest regularly (on a monthly, semi-monthly, quarterly or annual basis), in exchange for shares of a fund, shares of any of the funds managed by BNYM Investment Adviser listed under "Services for Fund Investors – Fund Exchanges", or in shares of certain funds in the BNY Mellon Family of Funds, if the investor is a shareholder in such fund. There is currently no fee for this privilege.

### **Account Statements**

Every investor in a fund in the BNY Mellon Family of Funds automatically receives regular account statements. Each investor will also be sent a yearly statement detailing the tax characteristics of any dividends and distributions the investor has received.

## Financial Highlights

As to each fund, these financial highlights describe the performance of the fund's Institutional shares for the fiscal periods indicated. "Total return" shows how much your investment in the fund would have increased (or decreased) during each period, assuming you had reinvested all dividends and distributions. These financial highlights have been derived from the fund's financial statements, which have been audited by Ernst & Young LLP, an independent registered public accounting firm, whose report, along with the fund's financial statements, is included in the fund's annual report, which is available upon request.

<b>Dreyfus Cash Management</b>	<b>Year Ended January 31,</b>				
<b>Institutional Shares</b>	<b>2021</b>	<b>2020</b>	<b>2019</b>	<b>2018</b>	<b>2017<sup>a</sup></b>
<b>Per Share Data (\$):</b>					
Net asset value, beginning of period	1.0005	1.0002	.9999	1.0002	1.00
Investment Operations:					
Investment income—net <sup>b</sup>	.0050	.0229	.0216	.0114	.0036
Net realized and unrealized gain (loss) on investments	(.0004)	(.0005) <sup>c</sup>	(.0003)	(.0003)	.0002
Distributions:					
Dividends from investment income-net	(.0040)	(.0221)	(.0210)	(.0114)	(.0036)
Net asset value, end of period	1.0011	1.0005	1.0002	.9999	1.0002
<b>Total Return (%)</b>	.47	2.27	2.15	1.11	.38
<b>Ratios/Supplemental Data (%):</b>					
Ratio of total expenses to average net assets	.21	.21	.21	.25	.22
Ratio of net expenses to average net assets	.11	.11	.09	.12	.22
Ratio of net investment income to average net assets	.50	2.22	2.13	1.20	.31
Net Assets, end of period (\$ x 1,000)	4,906,825	10,233,582	9,526,673	6,884,805	2,925,514

<sup>a</sup> Effective October 10, 2016, the fund adopted the SEC's money market fund amendments and began calculating its net asset value to four decimals.

<sup>b</sup> Based on average shares outstanding.

<sup>c</sup> In addition to net realized and unrealized losses on investments, this amount includes an increase in net asset value per share resulting from the timing of issuances and redemptions of shares in relation to fluctuating market values for the fund's investments.

<b>Dreyfus Government Cash Management</b>	<b>Year Ended January 31,</b>				
<b>Institutional Shares</b>	<b>2021</b>	<b>2020</b>	<b>2019</b>	<b>2018</b>	<b>2017</b>
<b>Per Share Data (\$):</b>					
Net asset value, beginning of period	1.00	1.00	1.00	1.00	1.00
Investment Operations:					
Investment income—net	.002	.020	.018	.009	.003
Distributions:					
Dividends from investment income-net	(.002)	(.020)	(.018)	(.009)	(.003)
Net asset value, end of period	1.00	1.00	1.00	1.00	1.00
<b>Total Return (%)</b>	.24	2.02	1.82	.85	.27
<b>Ratios/Supplemental Data (%):</b>					
Ratio of total expenses to average net assets	.21	.21	.21	.21	.22
Ratio of net expenses to average net assets	.15	.16	.17	.16	.15
Ratio of net investment income to average net assets	.20	2.00	1.79	.87	.30
Net Assets, end of period (\$ x 1,000)	82,115,918	52,217,126	51,959,429	61,917,499	49,219,152

## Financial Highlights (cont'd)

<b>Dreyfus Government Securities Cash Management</b>	<i>Year Ended January 31,</i>				
<b>Institutional Shares</b>	<b>2021</b>	<b>2020</b>	<b>2019</b>	<b>2018</b>	<b>2017</b>
<b>Per Share Data (\$):</b>					
Net asset value, beginning of period	1.00	1.00	1.00	1.00	1.00
Investment Operations:					
Investment income—net	.003	.019	.018	.008	.002
Distributions:					
Dividends from investment income-net	(.003)	(.019)	(.018)	(.008)	(.002)
Net asset value, end of period	1.00	1.00	1.00	1.00	1.00
<b>Total Return (%)</b>	<b>.25</b>	<b>1.94</b>	<b>1.78</b>	<b>.80</b>	<b>.22</b>
<b>Ratios/Supplemental Data (%):</b>					
Ratio of total expenses to average net assets	.21	.22	.22	.22	.22
Ratio of net expenses to average net assets	.20	.22	.21	.19	.18
Ratio of net investment income to average net assets	.23	1.96	1.76	.79	.22
Net Assets, end of period (\$ x 1,000)	3,211,177	3,245,834	4,142,111	3,764,742	3,766,664

<b>Dreyfus Treasury Obligations Cash Management</b>	<i>Year Ended January 31,</i>				
<b>Institutional Shares</b>	<b>2021</b>	<b>2020</b>	<b>2019</b>	<b>2018</b>	<b>2017</b>
<b>Per Share Data (\$):</b>					
Net asset value, beginning of period	1.00	1.00	1.00	1.00	1.00
Investment Operations:					
Investment income—net	.002	.020	.018	.008	.002
Distributions:					
Dividends from investment income-net	(.002)	(.020)	(.018)	(.008)	(.002)
Net asset value, end of period	1.00	1.00	1.00	1.00	1.00
<b>Total Return (%)</b>	<b>.22</b>	<b>1.99</b>	<b>1.82</b>	<b>.82</b>	<b>.22</b>
<b>Ratios/Supplemental Data (%):</b>					
Ratio of total expenses to average net assets	.21	.21	.21	.21	.21
Ratio of net expenses to average net assets	.16	.18	.18	.20	.18
Ratio of net investment income to average net assets	.19	1.97	1.83	.83	.23
Net Assets, end of period (\$ x 1,000)	22,701,392	14,900,109	15,314,155	17,116,541	16,853,981

## Financial Highlights (cont'd)

<b>Dreyfus Treasury Securities Cash Management</b>	<b>Year Ended January 31,</b>				
<b>Institutional Shares</b>	<b>2021</b>	<b>2020</b>	<b>2019</b>	<b>2018</b>	<b>2017</b>
<b>Per Share Data (\$):</b>					
Net asset value, beginning of period	1.00	1.00	1.00	1.00	1.00
Investment Operations:					
Investment income—net	.002	.019	.018	.008	.002
Distributions:					
Dividends from investment income-net	(.002)	(.019)	(.018)	(.008)	(.002)
Net asset value, end of period	1.00	1.00	1.00	1.00	1.00
<b>Total Return (%)</b>	<b>.24</b>	<b>1.96</b>	<b>1.78</b>	<b>.79</b>	<b>.19</b>
<b>Ratios/Supplemental Data (%):</b>					
Ratio of total expenses to average net assets	.21	.21	.21	.21	.21
Ratio of net expenses to average net assets	.17	.19	.20	.18	.18
Ratio of net investment income to average net assets	.21	1.93	1.75	.77	.19
Net Assets, end of period (\$ x 1,000)	29,170,141	24,169,621	23,505,647	27,366,026	27,660,470

<b>Dreyfus Tax Exempt Cash Management</b>	<b>Year Ended January 31,</b>				
<b>Institutional Shares</b>	<b>2021</b>	<b>2020</b>	<b>2019</b>	<b>2018</b>	<b>2017<sup>a</sup></b>
<b>Per Share Data (\$):</b>					
Net asset value, beginning of period	1.0001	1.0000	1.0000	1.0000	1.00
Investment Operations:					
Investment income—net <sup>b</sup>	.0039	.0133	.0122	.0066	.0026
Net realized and unrealized gain (loss) on investments	(.0007) <sup>d</sup>	(.0005) <sup>d</sup>	.0003	.0000 <sup>c</sup>	.0000 <sup>c</sup>
Distributions:					
Dividends from investment income-net	(.0034)	(.0127)	(.0125)	(.0066)	(.0026)
Net asset value, end of period	.9999	1.0001	1.0000	1.0000	1.0000
<b>Total Return (%)</b>	<b>.32</b>	<b>1.29</b>	<b>1.25</b>	<b>.66</b>	<b>.26</b>
<b>Ratios/Supplemental Data (%):</b>					
Ratio of total expenses to average net assets	.25	.26	.27	.26	.24
Ratio of net expenses to average net assets	.17	.20	.21	.26	.21
Ratio of net investment income to average net assets	.38	1.28	1.23	.65	.21
Net Assets, end of period (\$ x 1,000)	383,770	496,302	621,665	607,839	603,783

<sup>a</sup> Effective October 10, 2016, the fund adopted the SEC's money market fund amendment and began calculating its net asset value to four decimals.

<sup>b</sup> Based on average shares outstanding.

<sup>c</sup> Amount represents less than \$.0001 per share.

<sup>d</sup> In addition to net realized and unrealized losses on investments, this amount includes an increase in net asset value per share resulting from the timing of issuances and redemptions of shares in relation to fluctuating market values for the fund's investments.

## NOTES

# For More Information

More information on each fund is available free upon request, including the following:

## **Annual/Semiannual Report**

The funds' annual and semiannual reports describe the funds' performance, list portfolio holdings and contain a letter from the funds' manager discussing recent market conditions, economic trends and fund strategies that significantly affected the funds' performance during the period covered by the report. The funds' most recent annual and semiannual reports are available at [www.dreyfus.com](http://www.dreyfus.com).

## **Statement of Additional Information (SAI)**

The SAI provides more details about each fund and its policies. A current SAI is available at [www.dreyfus.com](http://www.dreyfus.com) and is on file with the Securities and Exchange Commission (SEC). The SAI, as amended or supplemented from time to time, is incorporated by reference (and is legally considered part of this prospectus).

## **Portfolio Holdings**

Dreyfus money market funds generally disclose, at [www.dreyfus.com](http://www.dreyfus.com), their complete schedule of holdings on each business day, as of the preceding business day. Each Dreyfus money market fund's daily posting of its complete portfolio holdings will remain available on the website for five months. From time to time, the funds may make available certain portfolio characteristics, such as allocations, performance- and risk-related statistics, portfolio-level statistics and non-security specific attribution analyses, upon request.

A complete description of the funds' policies and procedures with respect to the disclosure of a fund's portfolio securities is available in the fund's SAI and at [www.dreyfus.com](http://www.dreyfus.com).

## **To Obtain Information**

**By telephone.** Call your BNY Mellon Institutional Services representative or 1-800-346-3621

**By mail.** BNY Mellon Institutional Services, 144 Glenn Curtiss Boulevard, Uniondale, NY 11556-0144

**By E-mail.** Send your request to [info@bnymellon.com](mailto:info@bnymellon.com)

**On the Internet.** Certain fund documents can be viewed online or downloaded from:

SEC: [www.sec.gov](http://www.sec.gov)

Dreyfus money market funds: [www.dreyfus.com](http://www.dreyfus.com)

This prospectus does not constitute an offer or solicitation in any state or jurisdiction in which, or to any person to whom, such offering or solicitation may not lawfully be made.

### **Dreyfus Cash Management**

SEC file number: 811-04175

### **Dreyfus Government Cash Management**

#### **Dreyfus Government Securities Cash Management**

*Each a series of Dreyfus Government Cash Management Funds*

SEC file number: 811-03964

### **Dreyfus Treasury Obligations Cash Management**

SEC file number: 811-04723

### **Dreyfus Treasury Securities Cash Management**

SEC file number: 811-05718

### **Dreyfus Tax Exempt Cash Management**

*A series of Dreyfus Tax Exempt Cash Management Funds*

SEC file number: 811-03954